



# Harrogate COMPETITIVE FESTIVAL *for music, speech & drama*

## SYLLABUS 2026

March

6th - 8th, 13th - 15th, 20th - 22nd

Harrogate High School

Ainsty Road | Harrogate HG1 4AP

All Entries must be made online.  
The closing date is the 15th January 2026

[www.hcfmsd.co.uk](http://www.hcfmsd.co.uk)

Harrogatecompetitivefestivalofmusicspeechanddrama

Registered Charity 510706 @hcfmsd

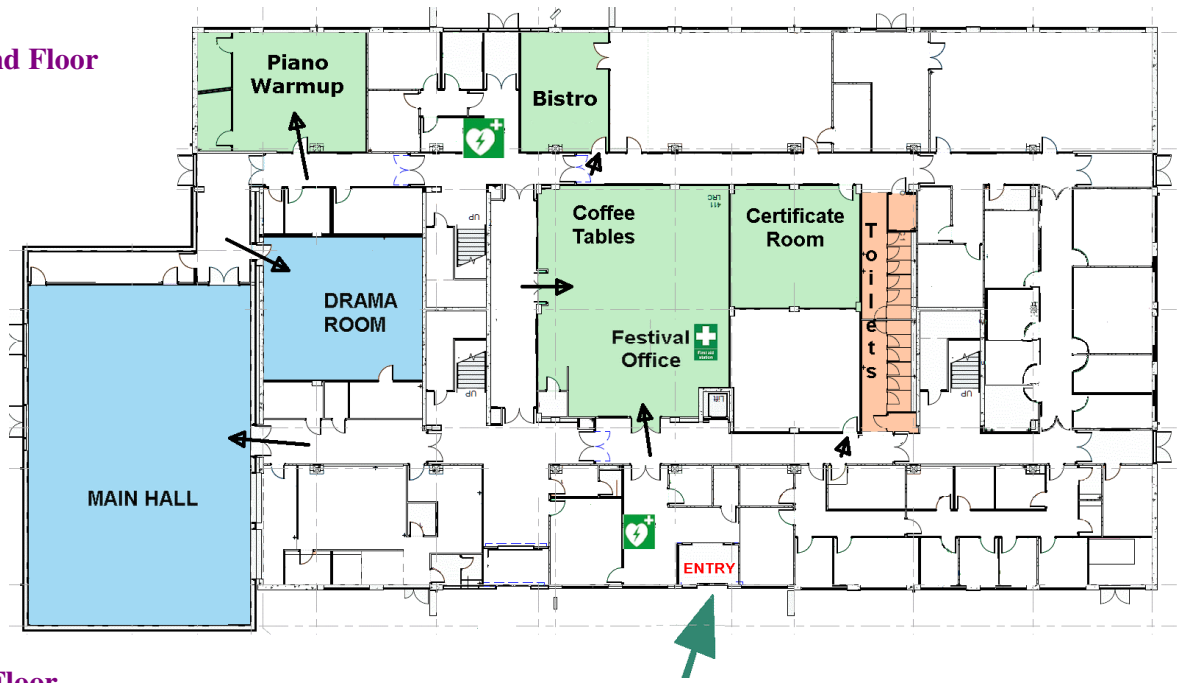


Headline sponsor

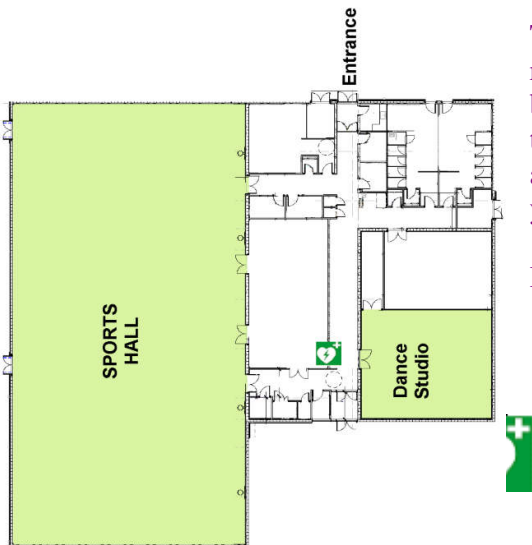
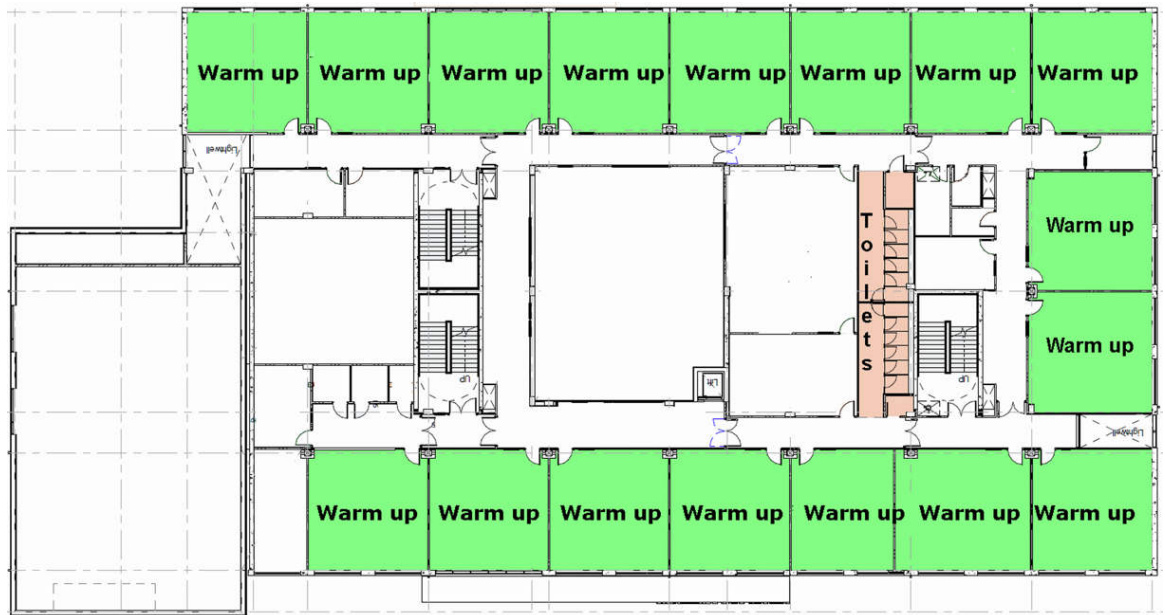


RHYTHMIC-CADENCE

**Ground Floor**



**First Floor**



The Dance Studio is in the building across to the right as you leave the front door of the Main School building. As you enter the playground/parking area, the entrance is on your left. Please buy an admission ticket from the main building first. Thank you

Defibrillator



First Aid Station

## Welcome

**Welcome to this year's festival from last year's winners.**



2025 Young Musician of the Festival:  
**Thomas Heath**, a percussionist.

and

2025 Speech and Drama Champion:  
**Evy Reed**, an actor.

### **And from our Chairman**

Barak Obama once said, "If you try to suppress the arts, then you're suppressing the deepest dreams and aspirations of a people."

In a complicated world, the performing arts bring people together like nothing else. We, at the Festival, continue to strive to showcase the very best talent in our area and are so looking forward to what will be an historic time for us. It is our 90th year as a Festival! As such, there may be one or two special events to look forward to.

Look out for us on social media too! There are bound to be some surprises!

So, please take the time to read and digest what we have on offer for you this coming year. We think it is an exciting Syllabus which will appeal to all.

I am really looking forward to seeing and welcoming you all in March.

A handwritten signature in black ink that reads "Paul Dutton". The signature is written in a cursive style.

Paul Dutton: Festival Chairman

## How you can help the Festival

### Make a donation!

It costs around £20,000 to deliver the Festival each year. We receive no regular government or council funding, so each Festival is only possible thanks to generous support from individuals and sponsors.

We aim to keep our entry fees low, so that the Festival is accessible to everyone, but rising costs are making this harder and harder. In 2024 we raised our entry fees for the first time in many years and we will be forced to do this every year without additional financial support.

We need your help so that we can continue to provide opportunities for aspiring musicians and drama students for years to come.

If you would like to see the Festival continue, please donate today at <https://cafdonate.cafonline.org/26045> or use the QR code here >>>



### Join us

Why not make a regular gift and become a Patron (£10 per year) or a Benefactor (£50 per year) and you'll receive benefits such as a free Programme and access to classes and the Final Concert. Or for £25 why not sponsor a class?

To find out more contact [treasurer@hcfmsd.co.uk](mailto:treasurer@hcfmsd.co.uk)

### Make a gift in memory

A gift in memory is a special and meaningful way to remember a loved one and their connection to the Festival. Making a donation or sponsoring a class or a prize in their name is an opportunity to pay tribute to your loved ones by continuing to support a cause close to their heart.

To find out more contact [treasurer@hcfmsd.co.uk](mailto:treasurer@hcfmsd.co.uk)

### Volunteer

We hope you enjoy the Festival and want to see it continue to provide opportunities for the encouragement and development of our performers. Every Festival is run entirely by volunteers and you can help us by giving your time across the Festival as a steward, ticket seller or even a certificate scribe. Over the years we have been fortunate to have had many volunteers to act as Adjudicators' Stewards, Door and Hall Stewards, Marshals, Certificate Scribes, Ticket and Souvenir Sellers. These numbers need to be replenished as volunteers retire and we really need some new volunteers.

Can you spare an afternoon to help us make next year's Festival happen? To find out more please contact Sally Hobkinson on [volunteering@hcfmsd.co.uk](mailto:volunteering@hcfmsd.co.uk)

**Provisional Timetable** (This **WILL CHANGE** when number of entries is known)

	<b>Morning</b>	<b>Afternoon</b>	<b>Evening</b>
<b>Friday 6<sup>th</sup> March</b>			Acting Piano Recorder Strings Woodwind
<b>Saturday 7<sup>th</sup> March</b>		Strings/Guitar Verse Speaking/Reading Entertainment Piano	
<b>Sunday 8<sup>th</sup> March</b>		Recorder/Woodwind Old Tyme Music Hall Harp	
<b>Friday 13<sup>th</sup> March</b>			Acting Singing Verse Speaking Brass
<b>Saturday 14<sup>th</sup> March</b>		Acting Entertainment Singing Verse Speaking Brass	
<b>Sunday 15<sup>th</sup> March</b>		Acting Entertainment Percussion/Drum Kit Verse Speaking/Reading Singing Brass	
<b>Friday 20<sup>th</sup> March</b>			Bands Choirs Orchestras Singing
<b>Saturday 21<sup>st</sup> March</b>		Bands Chamber Music Choirs Orchestras Singing	Barbershop Bands Choirs Orchestras Singing
<b>Sunday 22<sup>nd</sup> March</b>		Bands Choirs Orchestras Singing	<b>FINAL Concert – at 2.30pm Including Young Musician of the Festival &amp; Speech &amp; Drama Championship</b>

**Adjudicators**

David Beer	<i>Piano</i>
Lorraine Deacon	<i>Strings/guitar</i>
Daniel Chandler	<i>Woodwind</i>
Louise Thomson	<i>Harp</i>
Martin Wallington	<i>Choirs, Bands &amp; Orchestras</i>
David Beer	<i>Singing w/e 2</i>
Sarah Jefferies	<i>Singing w/e 3</i>
Julie McLoughlin	<i>Speech &amp; Drama</i>
Marcia Carr	<i>Speech &amp; Drama</i>
Carol Schroder	<i>Speech &amp; Drama</i>
Mark Sidwell	<i>Brass</i>
Chris Bradley	<i>Percussion</i>
Becca Stonewood	<i>Barbershop</i>
Jacqueline Edwards & Martin Wallington	<i>Young Musician Championship</i>
Carol Schroder	<i>Speech &amp; Drama Championship</i>

**David Beer** has a BA in Music and is a professional pianist and conductor. He has conducted many West End and international touring shows and appeared as a pianist on TV, radio, film soundtracks, and has recorded 3 original cast albums. He is also well known as an accompanist, in any style from classical to jazz, pop and musical theatre. He was Director of Music at the BRIT School for Performing Arts, Director of Performance at the Academy of Contemporary Music and has been a vocal coach at many leading drama colleges. He works regularly as Musical Director at Arts Educational Schools London, and Chichester University. David is an examiner for London College of Music, specialising in piano and singing and was recently awarded an FLCM for Professional Achievement. He has been a Music Mentor for Music for Youth for several years and is a member of the British and International Federation of Festivals.

**Daniel Chandler** performed as a professional flautist in orchestras, chamber ensembles and as a soloist after graduating from the Royal College of Music. Daniel also has a teaching degree from Edge Hill University and a master's degree in educational leadership from the University of Warwick. For several years Daniel was Assistant Director of Music at Merchant Taylors' School in Crosby and then Director of Music at AKS Lytham. He has conducted choral societies, choirs and numerous other groups in performances across the UK and further afield. This has included directing concerts in Westminster Abbey, Salzburg Cathedral, the United Nations and in St. Paul's Chapel, New York. Daniel is currently Assistant Head of Bolton Music Service which is the lead partner of the Greater Manchester Music Hub. He works with all sectors of the local community to increase access to quality music making and to support music education across schools and colleges. Daniel is a Professional Mentor for PGCE students studying at the RNCM and Manchester Metropolitan University. He is also a Trustee of Trust Music which is a charity that generates funds to support music education and engagement for young people; particularly those who are experiencing significant barriers to accessing musical opportunities. Daniel still manages to find time to continue performing, deliver workshops and adjudicate as a member of the British and International Federation of Festivals.

**Marcia Carr** trained at Royal Holloway University of London. She trained in music, dance and drama, and currently facilitates workshops and directs shows for universities, drama schools and theatre departments internationally. She is a qualified Feldenkrais Practitioner, a fellow of the Royal Society of Arts and a Senior Fellow of the Higher Education Academy. She has toured internationally, winning Best Performer, Manchester Evening News and Buxton Festival and a Time Out Critics Choice. Marcia is Co-Artistic Director of Arts Outburst and Co-Director of the Creative Blast Company, delivering educational packages, training young people, developing choirs, Community Companies and producing shows touring nationally and internationally in both theatrical and non-theatrical environments. She's an Associate Artist with the National Youth Theatre of Great Britain, directing shows, developing workshops, on audition panels and leading training, an Adjudicator for The British and International Federation of Festivals and Deputy Chief Examiner for the London Academy of Music and Dramatic Art.

**Jacqueline Edwards** is a descendant of Dame Clara Butt. She studied at the RCM and the Mozarteum, Salzburg. She has performed extensively in oratorio and on the concert platform, and has sung with Opera North, Glyndebourne Touring Opera, English Touring Opera, Wexford Festival Opera, Opéra du Nord in Lille, France and the BBC Singers. Jacqueline has been a qualified singing teacher and vocal coach for over thirty-five years, both in London and York, and teaches adult beginners to professionals, including members of Opera North and York Minster Songmen. Since 1993, Jacqueline has adjudicated Solo Singing for The British and International Federation of Festivals across the UK and in Southern Ireland, and in 1994, founded the highly successful York Competitive Festival of Singing. She has accompanied Master Classes presented by Malcolm Martineau, Richard Jackson and Dame Anne Evans for The Association of Teachers of Singing of which she is a member. Having a great interest in vocal physiology and rehabilitation, Jacqueline worked for some years as Singing Specialist for the multi-disciplinary Voice Clinic at Leeds General Infirmary. As both singer and pianist, Jacqueline presents a series of light-hearted one-woman shows for which she composes some of her own humorous material

**Louise Thomson** trained at the Royal Northern College of Music RNCM gaining graduate, postgraduate and master's degrees. She concluded her training by winning the Concerto Competition and performing as soloist with the RNCM String Orchestra playing Debussy's Danse Sacrée et Profane to critical acclaim. She has performed live on Radio 3 and made her television debut on BBC 1 with soprano Katherine Jenkins. She has also appeared as part of the Royal Variety Show. She won the Harp Finals at the Royal National Eisteddfod of Wales Competition and performed as a finalist in the London International Harp Competition at the Guildhall School of Music and Drama and was selected to audition for the position of Royal Harpist at Clarence House. She has also performed for HRH Queen Elizabeth and HRH the Duke of Edinburgh. She is an active chamber musician and performs regularly in many ensembles.

**Julie McLoughlin** trained at Rose Bruford College of Speech and Drama, worked in the professional theatre and has full Equity membership.

She has a BA Hons in English Literature and Education (OU) and taught for twenty years, first in Buckinghamshire where she was a Senior Moderator for CSE Drama and then in Jersey, where she set up A' Level Theatre Studies and GCSE Drama courses.

She has directed numerous school productions and is a Full Member of the Guild of Drama Adjudicators as well as an Adjudicator for The British and International Federation of Festivals. She teaches speech, drama, communication skills and public speaking to children and adults.

**Lorraine Deacon** studied the cello at the Royal Academy of Music with Douglas Cummings and chamber music with Sidney Griller, and whilst there was awarded the Manson Prize for the Performance of Contemporary Music by Sir Michael Tippett. She subsequently undertook further studies with David Smith of the Albarni Quartet. Her performing career ranges from West End theatre to the Orchestra of Scottish Opera, whilst recordings range from the haunting cello solo on Katie Melua's cover of "Turn to Tell" to the string chamber works of David Osbon with the Anglo American duo for Albany Records. She is now principal 'cellist with the Chameleon Arts Orchestra and gives regular chamber music recitals at South Hill Park and Norden Farm Arts Centre. Concerto performances include Bernstein's Three Meditations and the concertos of Elgar and Walton under conductor Philip Ellis.

Based in Berkshire she taught 'cello at Wellington College for many years and is passionate about passing on her joy of music-making to the next generation. Many former and existing pupils have been awarded music scholarships to prestigious public schools including Eton, Harrow, Winchester, Wellington, and Charterhouse, or have gained places at specialist centres such as Chethams and The Purcell School, and many have gone on to further study at the country's leading conservatoires.

She is an adjudicator member of the British and International Federation of Festivals.

**Chris Bradley** was Section Principal Percussion for the Orchestra of Opera North until December 2024. Alongside this position he also coached for The National Children's Orchestras, National Youth Orchestra of GB & Scotland, Ulster Youth Orchestra, East Riding Youth Orchestra and Yorchestra.

He is a Visiting Tutor for the Royal Birmingham Conservatoire and teaches at the University of Huddersfield.

Chris also plays the cimbalom and has performed at The Royal Opera House, Glyndebourne Opera, Hackney MDT, The Opera Group, English National Opera, London Symphony Orchestra, Philharmonia, BBC Scottish in the UK and in Europe with the Finnish Radio & Chamber Orchestras, the Mahler & Munich Chamber Orchestras, the Vienna Philharmonic and the Norwegian Opera & Ballet Orchestra.

**Martin Wallington** has now retired after 36 years as a viola player in the BBC Philharmonic. A graduate of Chetham's School Of Music and The Royal Northern College Of Music, he has enjoyed an exciting and fulfilling career playing in many of the finest concert halls in Europe, North and South America, China and Japan, as well as the BBC Proms and all the major concert venues in the UK.

Martin is hugely committed to his involvement in music education. He regularly advises senior students at the beginning of their professional career and was for a number of years a Mentor for the BBC Philharmonic/RNCM Professional Access Scheme, where students spend time working alongside their mentor in the professional working environment. In addition to his playing commitments, he has always had a busy private teaching practice, as well as teaching for a number of years in the Music Department at Manchester University.

Martin has been increasingly in demand as an Adjudicator both at school music competitions and at festivals all over the UK. He loves encouraging young people on their 'journey' to discovering the joy of making live music.

Away from music, Martin is a fluent French speaker and loves 'escaping' to France on holiday. He is a keen walker and will often be found hiking around the Yorkshire Wolds where he now lives with his wife (a cello teacher), a demanding cat and 2 crazy dogs!

**Sarah Jefferies** is a vocal graduate of the Royal Academy of Music, where she studied with Josephine Veasey and Patricia Clarke. Whilst at the Academy, Sarah was the recipient of many prizes including Early Music, Lieder and English Song. She was an active member of the opera course, singing roles by Britten, Strauss and Mozart. Upon leaving the Academy, Sarah studied with Margreet Honig and Elly Ameling at the Sweelinck Conservatorium in Amsterdam. She has sung recitals and oratorios all over the Europe and was a member of the Opera De Lyon, with whom she recorded many works including Schoenberg's 'Moses und Aron' and Orf's 'Carmina Burana'.

Sarah is a visiting teacher of voice at Marlborough College in Wiltshire and has adjudicated all over the UK and the Middle East, as well as at some of the major conservatoires in the U.K. Sarah has a real fascination for the workings of the human voice and enjoys helping her students of all ages and standards to improve their vocal abilities. She has a beautiful cocker spaniel, Maisie, who she enjoys walking for miles on the Wiltshire Downs near her home.

**Carol Schroder** works in the professional theatre, television and cabaret and has produced her own one woman show. She teaches presentation skills in commerce and industry and has taught ESL, SEN and drama at schools and colleges including Guildford School of Acting, Grandison College and, for 22 years, at Italia Conti Academy of Performing Arts and Croham Hurst School, Croydon.

Carol is an adjudicator for The British and International Federation of Festivals and has examined for LAMDA throughout the UK, Ireland and worldwide. Writing "The Discussion" 1&2 for LAMDA, she contributed to its Musical Theatre syllabus and "Musical Theatre – Exploring The World Through Song". She is a past Chair of STSD, the Society of Teachers of Speech and Drama. In 2019 she was awarded a fellowship of BIFF.

**Becca Stonewood** is a barbershop singer and certified British Association of Barbershop Singers singing judge from Sheffield. In 2021, she won a national gold medal with her quartet The Sharrow Vale Blues and in 2025 the quartet competed at the international Barbershop Harmony Society competition in Denver, Colorado, achieving a top 20 place and becoming one of the first British women to compete in the semi-finals. She has also been awarded national gold medals competing with women's chorus Cheshire Chord Company, and mixed chorus Crucible Vocal Project.

Becca has coached numerous groups across the UK including attending the Irish Association of Barbershop Singers Spring Sing as one of their guest educators in January 2025.

Becca is a primary school teacher and leads the school choir, including directing musical productions of Joseph and the Amazing Technicolour Dreamcoat, Bugsy Malone and Disney's The Lion King Junior.

**Mark Sidwell** Born in 1972, Mark started playing the trumpet at the age of 8, moving quickly over to the cornet.

After early teaching from Wilfred Heaton, an eminent Salvation Army musician, and composer, Mark started playing with numerous local bands. Whilst at music college he studied the cornet with the legendary players, Philip McCann and Alan Morrison, whilst also receiving conducting tuition from Major Peter Parkes, one of the Brass Band movements most successful and respected Conductors.

Mark became the resident conductor of the Championship section band Northumbria Police at the age of 20, and has conducted ever since enjoying various conducting posts.

In July 2007, Mark joined the Grimethorpe Colliery Band and was a member of the cornet bench for two of the most successful years in the Bands illustrious history

Today Mark divides his time between freelance performance as a brass player and conductor, also teaching brass, both privately, and in several local schools. Many former pupils have gone on to study performance and composition at Music Colleges and conservatoires, and a number now play with some of the country's finest bands.

## Grading system

**95+ Exceptional:** A superlative performance, displaying exceptional artistic individuality.

**90-94 Outstanding:** An impressive performance technically and artistically, displaying spontaneity & clear individuality.

**85-89 Honours:** An excellent performance, demonstrating fluent technical and artistic skills with emerging individuality.

**80-84 Commended:** A convincing performance technically and artistically, with increasing stylistic and communication skills.

**75-79 Merit:** A competent performance, showing some artistic awareness and/or technical ability.

**70-74 Progressing:** A performance showing development of technique and/or communication and commitment.

**65-69 Developing:** A performance demonstrating an awareness of technical skills, requiring more consistency and artistry.

## Certificates

Performers should collect their Certificates and Adjudicator's assessment sheets from the Certificate Room at least 20 minutes after the end of their Class. Please allow more time when there are bigger classes. The Certificate Room may be closed at lunch time.

## Split Classes

These will be adjudicated as separate classes and awarded accordingly.

### General

**Entries** All entries must be made online via the entry system at our website [www.hcfmsd.co.uk](http://www.hcfmsd.co.uk) from mid - October 2025.

- 1) **Entry Fees** The Entry fee must be paid in full within the on-line system. Fees will only be refunded if the entry is not accepted.
- 2) **Closing date** for entries is 6.00pm on **Thursday the 15th January 2026. All entries must be made online. No late or incomplete or paper entries will be accepted.**
- 3) **Qualification** In classes where there is an age or school year qualification for entry, the age of the performer or the school year is taken as on 1<sup>st</sup> September 2025.
- 4) **One entry** No performer may make more than one entry in any one class unless the class allows for multiple instruments, in which case a performer may enter up to two times on different instruments. It must be made clear on the entry which instrument is being used.
- 5) **Solo performers or ensembles with more than 75% of the same performers** who have won a particular class for three consecutive years may not enter that class for a period of one year.
- 6) **Entry Confirmation** Each performer will be sent an e-mail confirmation of entry, which includes free admission to the appropriate session for the performer(s) only.
- 7) **Adjudication** Performers should begin only when the Adjudicator indicates. No performer, teacher *or other member of the audience* should approach the Adjudicator unless invited to do so, nor engage him/her in conversation on any matter, otherwise the performer may be disqualified. The Adjudicator's decision is final.
- 8) **Video, sound recording or photography** by any means is not permitted during performances or adjudications.
- 9) **Comments** will be welcome and should be made to the Festival Office before the end of the Festival.  
Winners' medals and trophies (where awarded) will be presented at the end of the adjudication. Winners of trophies will be required to enter into a bond for their safekeeping and return them properly cleaned and in good repair, to the address specified on the receipt by 31st January 2027. A suitable inscription, preferably on the plinth, is permitted at the holder's expense. If in doubt, the advice of the Festival Treasurer should be sought. Holders will be charged for the repair of any damage incurred while in their custody or in transit. Trophies must not be taken out of the country.
- 10) **Winners' certificates, medals and trophies (where awarded)** will be awarded provided that at least a Merit grading is obtained. For details of the grading system see Page 8.

- 11) **Certificates and Adjudicator's reports** may be collected from the Certificate Room at any time during the Festival. They will normally be ready 20 minutes after each Class ends although this could be longer depending on the size of the class. Please be patient and quiet when waiting in the certificate office. Any certificates, reports or music which have not been collected by the end of the Festival will be retained by the Certificate Secretary for three months. They will be posted to the performers on receipt of a stamped addressed A4 (unfolded) size envelope.
- 12) **The Committee reserves the right to:**
- a. Refuse an entry without giving a reason.
  - b. Engage additional Adjudicators should the need arise.
  - c. Cancel classes with insufficient entries and split classes with large entries.
  - d. Alter or cancel any of the arrangements detailed in the Syllabus or create such other regulations for the efficient conduct and good order of the Festival as may be required.
  - e. Modify the programme as circumstances dictate.
  - f. Disclaim all responsibility for injury or damage sustained by any performer or member of the audience and for the loss of music or personal effects not collected at the end of each session.
  - g. Disclaim all responsibility for copies of copyright works used without permission of the copyright owners.
  - h. Ascertain that every competing member of a group, society or school is a bona fide member.
  - i. Invite performers to appear in the Final Concert.
  - j. Decide on all questions or disputes arising out of or not provided for by these rules, which shall be final.
- 13) Any breach of these rules by performers may result in disqualification.
- 14) Correspondence requiring a reply should be accompanied by a stamped address envelope.

## Music

- 15) **Performance time** is taken from the first note of the piece to the last note. Where more than one piece is played, the clock will be stopped between each one so that only the time spent playing/singing will be counted. If the performance exceeds the time limit the performer will be downgraded but will still receive an adjudication. The performer will still be able to receive a trophy or a medal.
- Official Accompanist
- Official Accompanists may be provided for classes which are for Years 1 to 6 (or the equivalent Year Groups) and for younger Debut/Development Classes. There may be a fee for using the Official Accompanist which will be shown on each class where an Official Accompanist is available. The performer should discuss tempo with the Accompanist before the class starts. No practice time is scheduled, but if required the Festival can put the performer in contact with the Accompanist for a private arrangement to be made. For classes which are for grades 7 and above, including open, concerto and virtuoso classes, the Festival can put the performer in contact with our accompanists to make a private arrangement but the Festival will not provide Accompanists for these classes.

16) **Own choice** entries will not be accepted unless all the details, including the duration in minutes, are shown on the entry form. More than one piece may be included provided the total time is within the specified limit. An original must be available even if a photocopy is provided for the Adjudicator. These copies must be clearly marked with the class number and performer's name. An own choice piece may not be used in more than one class **nor may it be changed after the closing date for entries.**

17) **Photocopies of own choice music**

The Music Publishers Association "Code of Practice on Photocopying"  
[http://mpaonline.org.uk/Printed Music/The Code of Fair Practice to Photocopying Printed Music.html](http://mpaonline.org.uk/Printed_Music/The_Code_of_Fair_Practice_to_Photocopying_Printed_Music.html)

makes some allowances to the festival movement where volumes only are concerned. The relevant paragraph of the Code is given here.

*The Music Publishers' Association Code of Practice on Photocopying Copyright Works makes the following concession for copying own choice pieces from volumes only for the use of the Adjudicator at a festival, provided that the entrant or participant has already purchased his/her own copy and that the copy made is retained and destroyed by the Administrator of the festival immediately after the event. This permission specifically does not apply to set works.*

Use of other photocopies is not allowed; although a copy may be made to assist an accompanist with turning pages or if the original manuscript is too small to be read easily. Where this is the case, the original copy must also be brought to the festival.

Songs from shows in current production may be performed as concert items, without costume. Where the rules of the festival allow them to be performed in costume, then the costumes themselves or any props used, must not be copies of those used in a professional production.

- 18) **Performing Rights Society** As details of all music played throughout the Festival will be sent to the PRS, performers do not need to obtain permission for performance.
- 19) **Availability** of all music set in the Syllabus has been confirmed by the publishers.
- 20) **Warm up rooms** in which instruments can be tuned or warmed up will be provided. If changing rooms for choirs are required this should be noted on the entry form, together with the number in the choir.
- 21) **Repeats** should not be played or sung in the set pieces except as specified in the Syllabus. Piano accompaniments to solo instruments playing concerto movements should be abridged.
- 22) **Singing** Unless otherwise stated, songs may be sung in any language.
- 23) **Groups/Ensembles** Where there are two or more pieces, the same members of the ensemble should be used in each.
- 24) **Open Classes** Performers of any age are eligible to perform.
- 25) **Professional musicians and teachers** are not eligible to compete in classes for which their qualification applies.

- 26) **Backing Tracks** may be used where acceptable for face to face exams in ABRSM/Trinity. The performer must bring their own kit, to be operated by the performer or their own assistant. Festival volunteers will not operate the equipment. This applies to all Music classes.

## Speech and Drama

- 27) **Own choice copies** for the Adjudicator must be brought to the Festival. All scripts must be clearly legible and of suitable content to cause no offence to a mixed audience which may include children. **Swearing will be a reason for disqualification**. The title, author and publisher must be included with the name of the performer and class number.
- 28) **Copyright** The Festival has a licence issued by the Copyright Licensing Agency. This means that entrants do not have to seek copyright permission for any poetry, prose or solo dramatic items performed, to a time limit of 10 minutes. Authors will be directly reimbursed as a consequence of their work being performed at this Festival. *Duologues and group dramatic activity are not covered by this agreement, and copyright for these items should be sought by performers at the time of entry.* If you are unsure what is needed, you should call 01625 428297 (<http://www.federationoffestivals.org.uk>) for more, individual, information. Solo dramatic items must be announced with title and author at the time of performance to qualify for copyright indemnity, and the performer must not change the words or gender of the character.
- 29) **Acting** All acted scenes must be from a published play or an adaptation from a published book, (not a sketch or monologue) and must be suitable for a mixed audience which may include children. **Unsuitable material will lead to the entrant being disqualified.**
- 30) **Costumes** should not be worn but long practice skirts may be used, together with small items such as scarves, hats, shawls or gloves. Hand props may be used. Any costume is to be verified by the Adjudicator.
- 31) **Timing** An introduction is expected and must be included in the performance time. If the performance exceeds the time limit the performer will be downgraded but will still receive an adjudication. The performer will still be able to receive a trophy if one is awarded in that particular class.
- 32) **All acting and verse** should be performed from memory.
- 33) **Professional actors and teachers** are not eligible to compete in classes for which their qualification applies.
- 34) **Accompaniments** Live accompaniment is preferred but is not obligatory. This applies to all S&D classes.

## Entries

All Entries for the 2026 Festival must be made online via the entry page of our website [www.hcfmsd.co.uk](http://www.hcfmsd.co.uk) from mid - October 2025.

**The closing date for entries will be the 15th January 2026.**

**Please be very careful to check the time limit for your class.** Remember that practice and performing times can vary, so allow a little leeway.

**Entries must be complete and the correct fee(s) must be paid. No late entries will be accepted.**

This year, for copyright and scheduling reasons, for each piece being performed, the entry system is collecting the following information: Piece name, author/composer, publishers and expected performance time.

## Official Accompanist Requirements

**Own Choice music for the Official Accompanist must be sent by Friday the 23rd January 2026** to Cathy Starling, Esscroft, Walkers Passage, Harrogate, HG1 5AQ

- **The music must be clearly marked with the performer's name, class number and the piece or movement chosen.**
- **A clear photocopy may be sent but the original must be available on the day.**
- **Pages of the photocopy must be taped next to each other and must not be stapled.**
- **For vocal classes where a choice of key is available, it must be stated on the entry and on the music.**

**If the music is not received on time there may be a charge of up to £25**

## INDEX

<b>DEBUT/DEVELOPMENT.....</b>	<b>17</b>
<b>VIRTUOSO .....</b>	<b>18</b>
<b>PIANO.....</b>	<b>18</b>
<b>STRINGS.....</b>	<b>21</b>
<b>GUITAR.....</b>	<b>22</b>
<b>HARP .....</b>	<b>23</b>
<b>CHAMBER MUSIC .....</b>	<b>24</b>
<b>RECORDERS .....</b>	<b>25</b>
<b>WOODWIND.....</b>	<b>26</b>
<b>BRASS.....</b>	<b>30</b>
<b>PERCUSSION AND DRUM KIT .....</b>	<b>31</b>
<b>BANDS .....</b>	<b>33</b>
<b>ORCHESTRAS .....</b>	<b>33</b>
<b>SOLO SINGING .....</b>	<b>33</b>
<b>DUET &amp; TRIO SINGING .....</b>	<b>37</b>
<b>BARBERSHOP.....</b>	<b>37</b>
<b>CHOIRS.....</b>	<b>37</b>
<b>OLDE TYME MUSIC HALL .....</b>	<b>38</b>
<b>VERSE SPEAKING.....</b>	<b>39</b>
<b>READING .....</b>	<b>41</b>
<b>SPEAKING IN PUBLIC .....</b>	<b>41</b>
<b>READING FOR PERFORMANCE.....</b>	<b>42</b>
<b>ACTING.....</b>	<b>42</b>
<b>MIME .....</b>	<b>46</b>
<b>ENTERTAINMENT .....</b>	<b>46</b>
<b>OPEN DRAMA .....</b>	<b>47</b>

## Debut/Development

These classes are non-competitive, designed for first time entrants and anyone looking for performance experience.

- D1** MUSIC - NON COMPETITIVE KS1 AND KS2 (YEAR 6 & UNDER) Entry - £5 OA Fee: £0  
Up to 10 performers  
Not to exceed 3 minutes.  
Own Choice  
Performers who want to play for experience or solely for enjoyment are invited to come and perform a piece of music on any musical instrument or sing a song - in any style. The piece can be of any standard. Performers will gain valuable experience of performing in front of a friendly and welcoming audience and will each receive feedback from our adjudicator.
- D2** MUSIC - NON COMPETITIVE KS3 & 4 (YEAR 7 TO 10) Entry - £8 OA Fee: £0  
Up to 10 performers  
Not to exceed 6 minutes.  
Own Choice  
Performers who want to play for experience or solely for enjoyment are invited to come and perform a piece of music on any musical instrument or sing a song - in any style. The piece can be of any standard. Performers will gain valuable experience of performing in front of a friendly and welcoming audience and will each receive feedback from our adjudicator.
- D3** MUSIC - NON COMPETITIVE KS5 (YEAR 9 TO 13) Entry - £8 OA Fee: £0  
Up to 10 performers  
Not to exceed 6 minutes.  
Own Choice  
Performers who want to play for experience or solely for enjoyment are invited to come and perform a piece of music on any musical instrument or sing a song - in any style. The piece can be of any standard. Performers will gain valuable experience of performing in front of a friendly and welcoming audience and will each receive feedback from our adjudicator.
- D4** DRAMA - NON COMPETITIVE KS1 AND KS2 (YEAR 6 & UNDER) Entry - £5  
Up to 10 performers  
Not to exceed 3 minutes.  
Own Choice  
Performers who want to perform for experience or solely for enjoyment are invited to come and perform a poem, deliver a prepared piece of reading from a book, or perform any short piece of individual drama. The piece can be of any standard. Performers will gain valuable experience of performing in front of a friendly and welcoming audience and will each receive feedback from our adjudicator.
- D5** DRAMA - NON COMPETITIVE KS3, 4 & 5 (YEAR 7 TO 13) Entry - £8  
Up to 10 performers  
Not to exceed 5 minutes.  
Own Choice  
Performers who want to perform for experience or solely for enjoyment are invited to come and perform a poem, deliver a prepared piece of reading from a book, or perform any short piece of individual drama. The piece can be of any standard. Performers will gain valuable experience of performing in front of a friendly and welcoming audience and will each receive feedback from our adjudicator.
- D6** MUSIC - NON COMPETITIVE (OPEN) Entry - £10 OA Fee: £0  
Up to 10 performers  
Not to exceed 6 minutes.  
Own Choice  
Performers who want to play for experience or solely for enjoyment are invited to come and perform a piece of music on any musical instrument or sing a song - in any style. The piece can be of any standard. Performers will gain valuable experience of performing in front of a friendly and welcoming audience and will each receive feedback from our adjudicator.

- D7** DRAMA - NON COMPETITIVE (OPEN) Entry - £10  
 Up to 10 performers  
 Not to exceed 5 minutes.  
 Own Choice  
 Performers who want to perform for experience or solely for enjoyment are invited to come and perform a poem, deliver a prepared piece of reading from a book, or perform any short piece of individual drama. The piece can be of any standard. Performers will gain valuable experience of performing in front of a friendly and welcoming audience and will each receive feedback from our adjudicator.

## Virtuoso

**This is a class requiring a degree of skill, versatility and artistry.**

- VC1** THE ELIZABETH HOPKINS TROPHY (VIRTUOSO CLASS) Entry: £15  
 Not to exceed 12 minutes.  
 Own Choice  
 Performers must play two different pieces, each one on different instruments from different disciplines (for example: violin and piano, or flute and singing, but not violin and cello, nor flute and clarinet, nor clarinet and saxophone) The first piece should be at grade 8 (or above) standard and the second at grade 6 (or above) standard. Neither piece must have been entered by the performer in any other class at this year's festival.

## Piano

**This year's grand piano is a Steinway Model C supplied and tuned by North Yorkshire company; [thepianoworkshop.co.uk](http://thepianoworkshop.co.uk)**

**For information on hiring this instrument please contact Aidan Delacey-Simms ([aidansimms@yahoo.co.uk](mailto:aidansimms@yahoo.co.uk))**

- P1** IT'S PIANO TIME! (YEAR 4 & UNDER) Entry: £8  
 Own Choice  
 Choose one piece from the following list:  
 The Little Brook (Piano Time Tutor Bk.1)  
 The Secret Garden (Piano Time Pieces 1)  
 The Sloop 'John B' (Piano Time Jazz 1)  
 Vampire Blues (Spooky Piano Time)  
 Stegosaurus Stomp (Prehistoric Piano Time)
- P2** PIANO SOLO (YEAR 5 & UNDER) Entry: £8  
 Own Choice  
 EITHER A Ghostly Tale by Pam Wedgwood (from Up-Grade Book 0-1 pub. Faber)  
 OR Any piece (including alternatives) from 2025/26 ABRSM Initial Grade or Trinity College Initial Grade Exam Pieces from 2023
- P3** PIANO SOLO (YEAR 6 & UNDER) Entry: £8  
 Own Choice  
 EITHER Flying Above the Clouds by Alan Bullard (from The Best of Grade 1 pub. Faber) OR  
 Any piece (including alternatives) from 2025/26 ABRSM Grade 1 or Trinity College Grade 1 Exam Pieces from 2023
- P4** PIANO SOLO (YEAR 7 & UNDER) Entry: £10  
 Own Choice  
 EITHER Compliment à Grandmaman by Mélanie Bonis (from Album pour les tout-petits pub. Schott Student Edition)  
 OR Any piece (including alternatives) from 2025/26 ABRSM Grade 2 or Trinity College Grade 2 Exam Pieces from 2023

From inspiration to perfection

**PIANO LESSONS IN HARROGATE  
PROFESSIONAL ACCOMPANIMENT SERVICES  
ADVANCED PERFORMANCE COACHING**

Come and learn from concert pianists

Full ABRSM and Trinity exam training

Specialist Diploma coaching

We warmly welcome complete beginners of all ages!

Piano accompaniment service for exams, auditions and concert performances

Please get in touch to start your piano playing journey

Phone: 077 66 88 1999 | Email: [julian@saphirpianostudios.com](mailto:julian@saphirpianostudios.com)

- P5** PIANO SOLO (YEAR 8 & UNDER) Entry: £10  
Own Choice  
EITHER Dwarfs in the Mist by Walter Carroll (from Forest Fantasies - pub. Forsyth) OR Any piece (including alternatives) from 2025/26 ABRSM Grade 3 or Trinity College Grade 3 Exam Pieces from 2023  
The winner will receive the Jessie Hodgson Memorial Prize (Â£25)
- P6** PIANO SOLO (YEAR 9 & UNDER) Entry: £10  
Own Choice  
EITHER Etude in A minor Op 27 No 3 by D. Kabalevsky (from 30 Children's Pieces pub. Boosey & Hawkes)  
OR Any piece (including alternatives) from 2025/26 ABRSM Grade 4 or Trinity College Grade 4 Exam Pieces from 2023  
Sponsored by Mrs E Pawley
- P7** PIANO SOLO (YEAR 10 & UNDER) Entry: £12  
Not to exceed 6 minutes.  
Own Choice  
Two contrasting pieces of at least Grade 5 standard.  
The winner will receive the McLusky Challenge Prize (Â£25)
- P8** PIANO SOLO (YEAR 11 & UNDER) Entry: £12  
Not to exceed 8 minutes.  
Own Choice  
Two contrasting pieces of at least Grade 6 standard
- P9** PIANO SOLO (OPEN) Entry - £15  
Not to exceed 10 minutes.  
Own Choice  
Two contrasting pieces of at least Grade 7 standard

- P10** JUNIOR JAZZ CLASS (YEARS 9 & UNDER) Entry: £10  
 Not to exceed 5 minutes.  
 Own Choice  
 Any two pieces selected from  
 Easy Jazzy Piano by Mike Cornick (pub. Universal Edition), and/or  
 Jazz, Rags & Blues Book 2 by Martha Mier (pub: Alfred)
- P11** SENIOR JAZZ CLASS (YEAR 13 & UNDER) Entry: £12  
 Not to exceed 8 minutes.  
 Own Choice  
 Any two pieces selected from  
 Jazz in Autumn by Nikki Iles (pub: OUP)  
 and/or Latin Preludes by Christopher Norton (pub. Boosey & Hawkes)
- \*\*\*\*\* This class leads to the Young Musician of the Festival \*\*\*\*\***
- P12** PIANO SOLO (YEAR 13 & UNDER) Entry: £12  
 Not to exceed 10 minutes.  
 Own Choice  
 Own choice programme of contrasting pieces  
 The highest placed performers of classes P12, P13, P14, P15 and P16 will each be invited to compete against each other in P17 playing their same pieces.
- \*\*\*\*\* This class leads to the Young Musician of the Festival \*\*\*\*\***
- P13** SONATA CLASS (YEAR 13 & UNDER) Entry: £12  
 Not to exceed 10 minutes.  
 Own Choice  
 Any one movement from any Classical, Romantic or Modern Sonata  
 The highest placed performers of classes P12, P13, P14, P15 and P16 will each be invited to compete against each other in P17 playing their same pieces.
- \*\*\*\*\* This class leads to the Young Musician of the Festival \*\*\*\*\***
- P14** BAROQUE & CLASSICAL CLASS (YEAR 13 & UNDER) Entry: £12  
 Not to exceed 10 minutes.  
 Own Choice  
 Any piece(s) from the Baroque and Classical Periods  
 The highest placed performers of classes P12, P13, P14, P15 and P16 will each be invited to compete against each other in P17 playing their same pieces.
- \*\*\*\*\* This class leads to the Young Musician of the Festival \*\*\*\*\***
- P15** ROMANTIC CLASS (YEAR 13 & UNDER) Entry: £12  
 Not to exceed 10 minutes.  
 Own Choice  
 Any piece(s) from the Romantic Period.  
 Sponsored by Mrs Smirnova  
 The highest placed performers of classes P12, P13, P14, P15 and P16 will each be invited to compete against each other in P17 playing their same pieces.
- \*\*\*\*\* This class leads to the Young Musician of the Festival \*\*\*\*\***
- P16** MODERN CLASS (YEAR 13 & UNDER) Entry: £12  
 Not to exceed 10 minutes.  
 Own Choice  
 Any piece(s) composed from 1900 - present day.  
 The highest placed performers of classes P12, P13, P14, P15 and P16 will each be invited to compete against each other in P17 playing their same pieces.
- \*\*\*\*\* Playoff class leading to the Young Musician of the Festival \*\*\*\*\***
- P17** PIANO SOLO CHAMPIONSHIP (PLAY-OFF)  
 Not to exceed 10 minutes.  
 The highest placed performers of Classes P12, P13, P14, P15 and P16 will be invited to compete against each other in this class playing the same repertoire from the qualifying class. The winner of this class will be invited to compete for the Young Musician of the Festival in the Final Concert on 22nd March at 2:30pm, performing their same piece(s).  
 Sponsored by William Atkinson

- P18** OPEN CLASS Entry: £16  
 Not to exceed 10 minutes.  
 Own Choice  
 Any piece(s) in any style.
- P19** JUNIOR PIANO DUET & TRIO CLASS (YEAR 9 & UNDER) (4 OR 6 HANDS) Entry: £16  
 Not to exceed 5 minutes.  
 Own Choice
- P20** SENIOR PIANO DUET & TRIO CLASS (YEARS 13 & UNDER) (4 OR 6 HANDS) Entry: £16  
 Not to exceed 8 minutes.  
 Own Choice  
 Sponsored by Mr & Mrs K S Burton
- P21** OPEN PIANO DUET & TRIO CLASS (4 OR 6 HANDS) Entry: £16  
 Not to exceed 8 minutes.  
 Own Choice

## Strings

### String classes are for bowed instruments.

- ST1** STRING SOLO (GRADES 1 & 2) Entry: £8  
 Own Choice  
 Any piece from the current ABRSM or current Trinity syllabus.
- ST2** STRING SOLO (GRADE 3) Entry: £8 OA Fee: £0  
 Own Choice  
 Any piece from the current ABRSM or current Trinity syllabus.
- ST3** STRING SOLO (GRADES 4 & 5) Entry: £12 OA Fee: £0  
 Own Choice  
 Any piece from the current ABRSM or current Trinity syllabus.
- ST4** STRING SOLO (GRADE 6) Entry: £12 OA Fee: £10  
 Not to exceed 6 minutes.  
 Own Choice  
 Any piece from the current ABRSM or current Trinity syllabus.  
 Sponsored by Mrs J. Moore
- ST5** STRING SOLO (GRADES 7) Entry: £12  
 Not to exceed 7 minutes.  
 Own Choice  
 Any piece from the current ABRSM or current Trinity syllabus.
- ST6** STRING SOLO (GRADES 8) Entry: £12  
 Not to exceed 8 minutes.  
 Own Choice  
 Any piece from the current ABRSM or current Trinity syllabus.  
 Sponsored by Anonymous
- \*\*\*\*\* This class leads to the Young Musician of the Festival \*\*\*\*\***
- ST7** STRING SOLO (YEAR 13 & UNDER) Entry: £12  
 Not to exceed 10 minutes.  
 Own Choice

The highest placed performers of Classes ST7, G3, G7, H3 & H6 will be invited to compete against each other in class ST16 playing the same repertoire from the qualifying class. The winner of this P16 will be invited to compete for the Young Musician of the Festival in the Final Concert on 22nd March at 2:30pm, performing their same piece(s).

- ST8** STRING SOLO (OPEN) Entry: £15  
 Not to exceed 15 minutes.  
 Own Choice  
 Sponsored by P Dutton
- ST9** STRING GROUP (YEAR 10 & UNDER) Entry: £12  
 Minimum of 5 performers  
 Not to exceed 6 minutes.  
 Own Choice
- ST10** STRING GROUP (YEAR 13 & UNDER) Entry: £15  
 Minimum of 5 performers  
 Not to exceed 10 minutes.  
 Own Choice
- ST11** STRING GROUP (OPEN) Entry: £15  
 Minimum of 5 performers  
 Not to exceed 10 minutes.  
 Own Choice
- ST12** STRING GROUP (OPEN) - NON-COMPETITIVE Entry: £15  
 Minimum of 5 performers  
 Not to exceed 10 minutes.  
 Own Choice
- ST13** STRING DUET, TRIO OR QUARTET (YEAR 10 & UNDER) Entry: £12  
 Not to exceed 6 minutes.  
 Own Choice
- ST14** STRING DUET, TRIO OR QUARTET (OPEN) Entry: £15  
 Not to exceed 10 minutes.  
 Own Choice
- ST15** STRING DUET, TRIO OR QUARTET (OPEN) Entry: £15  
 Not to exceed 10 minutes.  
 Own Choice

\*\*\*\*\* **This class leads to the Young Musician of the Festival** \*\*\*\*\*

- ST16** THOMAS TROPHY COMPETITION (PLAY-OFF)  
 Own Choice  
 The highest placed performers of Classes ST7, G3, G7, H3 & H6 will be invited to compete against each other in class ST16 playing the same repertoire from the qualifying class. The winner of P16 will be invited to compete for the Young Musician of the Festival in the Final Concert on 22nd March at 2:30pm, performing their same piece(s).

## Guitar

- G1** CLASSICAL GUITAR (YEAR 6 & UNDER) Entry: £8  
 Not to exceed 3 minutes.  
 Perform up to 3 pieces  
 Own Choice
- G2** CLASSICAL GUITAR (YEAR 9 & UNDER) Entry: £10  
 Not to exceed 4 minutes.  
 Perform up to 3 pieces  
 Own Choice

**\*\*\*\*\* This class leads to the Young Musician of the Festival \*\*\*\*\***

- G3** CLASSICAL GUITAR (YEAR 13 & UNDER)(GRADES 7 & 8) Entry: £12  
Not to exceed 10 minutes.  
Perform up to 3 pieces  
Own Choice  
The highest placed performers of Classes ST7, G3, G7, H3 & H6 will be invited to compete against each other in class ST16 playing the same repertoire from the qualifying class. The winner of ST16 will be invited to compete for the Young Musician of the Festival in the Final Concert on 22nd March at 2:30pm, performing their same piece(s).
- G4** CLASSICAL GUITAR ENSEMBLE (OPEN) Entry: £15  
Minimum of 2 performers  
Not to exceed 8 minutes.  
Perform up to 3 pieces  
Own Choice  
No conductors allowed.
- G5** ACOUSTIC GUITAR (OPEN) Entry: £15  
Not to exceed 8 minutes.  
Perform up to 3 pieces  
Own Choice
- G6** ELECTRIC GUITAR & BASS GUITAR (YEAR 9 & UNDER) Entry: £10  
Not to exceed 5 minutes.  
Own Choice  
From Rockschool publications. Backing tracks may be used for this class. PA provided.

**\*\*\*\*\* This class leads to the Young Musician of the Festival \*\*\*\*\***

- G7** ELECTRIC GUITAR & BASS GUITAR (YEAR 13 & UNDER) Entry: £12  
Not to exceed 8 minutes.  
Own Choice  
From Rockschool publications. Backing tracks may be used for this class. PA provided.  
The highest placed performers of Classes ST7, G3, G7, H3 & H6 will be invited to compete against each other in class ST16 playing the same repertoire from the qualifying class. The winner of ST16 will be invited to compete for the Young Musician of the Festival in the Final Concert on 22nd March at 2:30pm, performing their same piece(s).

## Harp

- H1** LEVER HARP ELEMENTARY (GRADES 1-3) Entry: £8 OA Fee: £0  
Not to exceed 3 minutes.  
Perform up to 3 pieces  
Own Choice
- H2** LEVER HARP (GRADES 4 - 5) Entry: £12 OA Fee: £0  
Not to exceed 5 minutes.  
Perform up to 3 pieces  
Own Choice
- \*\*\*\*\* This class leads to the Young Musician of the Festival \*\*\*\*\***
- H3** LEVER HARP ADVANCED (GRADE 6 & OVER AND YEAR 13 & UNDER) Entry: £12 OA Fee: £10  
Not to exceed 10 minutes.  
Perform up to 3 pieces  
Own Choice  
The highest placed performers of Classes ST7, G3, G7, H3 & H6 will be invited to compete against each other in class ST16 playing the same repertoire from the qualifying class. The winner of ST16 will be invited to compete for the Young Musician of the Festival in the Final Concert on 22nd March at 2:30pm, performing their same piece(s).

- |   |   |            |             |
|---|---|------------|-------------|
| <b>H4</b>   | PEDAL HARP ELEMENTARY (GRADES 1-3)<br>Not to exceed 3 minutes.<br>Perform up to 3 pieces<br>Own Choice<br>Sponsored by Mr & Mrs A K Davies  | Entry: £8  | OA Fee: £0  |
| <b>H5</b>   | PEDAL HARP (GRADES 4-5)<br>Not to exceed 5 minutes.<br>Perform up to 3 pieces<br>Own Choice   | Entry: £12 | OA Fee: £0  |
| <b>***** This class leads to the Young Musician of the Festival *****</b> |   |            |             |
| <b>H6</b>   | PEDAL HARP ADVANCED (GRADE 6 & OVER AND YEAR 13 &<br>UNDER)<br>Not to exceed 10 minutes.<br>Perform up to 3 pieces<br>Own Choice<br>The highest placed performers of Classes ST7, G3, G7, H3 & H6 will be invited to compete against each other in class ST16 playing the same repertoire from the qualifying class. The winner of ST16 will be invited to compete for the Young Musician of the Festival in the Final Concert on 22nd March at 2:30pm, performing their same piece(s). | Entry: £12 | OA Fee: £10 |
| <b>H7</b>   | HARP DUET (OPEN)<br>Not to exceed 5 minutes.<br>Perform up to 3 pieces<br>Own Choice  | Entry: £15 | OA Fee: £10 |
| <b>H8</b>   | HARP ENSEMBLE (OPEN)<br>Minimum of 3 performers<br>Not to exceed 8 minutes.<br>Perform up to 3 pieces<br>Own Choice<br>Conductors are not allowed.  | Entry: £15 | OA Fee: £10 |

## Chamber Music

- |            |   |            |
|------------|---|------------|
| <b>CM1</b> | CONCERTO CLASS (YEAR 13 & UNDER)<br>One or two performers<br>Not to exceed 15 minutes.<br>Own Choice<br>One or two movements of a concerto or an original piece for soloist(s) and orchestra. This Class will be adjudicated by a panel which will include a representative from the Harrogate Philharmonic Orchestra.<br>This is for Brass, Woodwind, Strings, Organ and Piano. The winner may be offered an engagement with the Harrogate Philharmonic Orchestra if the performance is considered to be of a suitable standard and if the instrumentation is appropriate. | Entry: £25 |
| <b>CM2</b> | CHAMBER CLASS (YEAR 10 & UNDER)<br>Not to exceed 12 minutes.<br>Perform up to 3 pieces<br>Own Choice<br>There may be only two players per part.<br>Sponsored by Mr & Mrs J. R. Watkins  | Entry: £12 |
| <b>CM3</b> | CHAMBER CLASS (YEAR 13 & UNDER)<br>Not to exceed 10 minutes.<br>Perform up to 3 pieces<br>Own Choice<br>There may be only two players per part.   | Entry: £15 |

- CM4** CHAMBER CLASS (OPEN) Entry: £15  
 Not to exceed 10 minutes.  
 Perform up to 3 pieces  
 Own Choice  
 There may be only two players per part.
- CM5** FAMILY CLASS (OPEN) Entry: £15  
 Minimum of 2 performers  
 Not to exceed 8 minutes.  
 Perform up to 3 pieces  
 Own Choice  
 The piece may be an original work or an arrangement and may take the form of an instrumental or vocal trio etc., or solo instruments or voices and accompaniment. There must be 2 or more performers, all from the same family and from 2 or more generations.

## Recorders

**Please note that Adult Recorder players may also enter W19.**

- RC1** DESCANT AND/OR TREBLE RECORDER SOLO (GRADE 1 OR 2) Entry: £8 OA Fee: £0  
 Not to exceed 3 minutes.  
 Perform up to 3 pieces  
 Own Choice  
 Any piece(s) from the current ABRSM or current Trinity syllabus.
- RC2** DESCANT AND/OR TREBLE RECORDER SOLO (GRADE 3 OR 4) Entry: £8 OA Fee: £0  
 Not to exceed 5 minutes.  
 Perform up to 3 pieces  
 Own Choice  
 Any piece(s) from the current ABRSM or current Trinity syllabus.
- RC3** DESCANT AND/OR TREBLE RECORDER SOLO (GRADE 5 OR 6) Entry: £12 OA Fee: £10  
 Not to exceed 7 minutes.  
 Perform up to 3 pieces  
 Own Choice  
 Any piece(s) from the current ABRSM or current Trinity syllabus.  
 The winners of Classes RC3, W3, W5, W7, and W9 will be invited to compete against each other in W17 playing the same repertoire from the qualifying class.

**\*\*\*\*\* This class leads to the Young Musician of the Festival \*\*\*\*\***

- RC4** DESCANT AND/OR TREBLE RECORDER SOLO (GRADE 7 OR 8 AND YEAR 13 & UNDER) Entry: £12  
 Not to exceed 10 minutes.  
 Perform up to 3 pieces  
 Own Choice  
 Any piece(s) from the current ABRSM or current Trinity syllabus.  
 The winners of Classes RC4, W4, W6, W8, W10, and W16 will be invited to compete against each other in W18 playing the same repertoire from the qualifying class.

## Woodwind

**Please note that instruments, except recorders, at Grades 1-2 and 3-4 have been combined into W1 and W2 respectively.**

- W1** WOODWIND SOLO, EXCLUDING RECORDERS (GRADE 1 OR 2) Entry: £8 OA Fee: £0  
Not to exceed 3 minutes.  
Perform up to 3 pieces  
Own Choice  
Any piece(s) from the current ABRSM or Trinity Syllabus for your instrument.
- W2** WOODWIND SOLO, EXCLUDING RECORDERS (GRADE 3 OR 4) Entry: £12 OA Fee: £0  
Not to exceed 5 minutes.  
Perform up to 3 pieces  
Own Choice  
Any piece(s) from the current ABRSM or Trinity Syllabus for your instrument.
- W3** FLUTE SOLO (GRADE 5 OR 6) Entry: £12 OA Fee: £10  
Not to exceed 7 minutes.  
Perform up to 3 pieces  
Own Choice  
Any piece(s) from the current ABRSM or Trinity Syllabus.  
The winners of Classes RC3, W3, W5, W7, and W9 will be invited to compete against each other in W17 playing the same repertoire from the qualifying class.
- \*\*\*\*\* This class leads to the Young Musician of the Festival \*\*\*\*\***
- W4** FLUTE SOLO (GRADE 7 OR 8) Entry: £12  
Not to exceed 10 minutes.  
Perform up to 3 pieces  
Own Choice  
Any piece(s) from the current ABRSM or Trinity Syllabus.  
The winners of Classes RC4, W4, W6, W8, W10, and W16 will be invited to compete against each other in W18 playing the same repertoire from the qualifying class.
- W5** OBOE OR BASSOON SOLO (GRADE 5 OR 6) Entry: £12 OA Fee: £10  
Not to exceed 7 minutes.  
Perform up to 3 pieces  
Own Choice  
Any piece(s) from the current ABRSM or Trinity Syllabus.  
The winners of Classes RC3, W3, W5, W7, and W9 will be invited to compete against each other in W17 playing the same repertoire from the qualifying class.
- \*\*\*\*\* This class leads to the Young Musician of the Festival \*\*\*\*\***
- W6** OBOE OR BASSOON SOLO (GRADE 7 OR 8 AND YEAR 13 OR UNDER) Entry: £12  
Not to exceed 10 minutes.  
Perform up to 3 pieces  
Own Choice  
Any piece(s) from the current ABRSM or Trinity Syllabus.  
The winners of Classes RC4, W4, W6, W8, W10, and W16 will be invited to compete against each other in W18 playing the same repertoire from the qualifying class.  
Sponsored by Mrs P Fenton.
- W7** CLARINET SOLO (GRADE 5 OR 6) Entry: £12 OA Fee: £10  
Not to exceed 7 minutes.  
Perform up to 3 pieces  
Own Choice  
Any piece(s) from the current ABRSM or Trinity Syllabus.  
The winners of Classes RC3, W3, W5, W7, and W9 will be invited to compete against each other in W17 playing the same repertoire from the qualifying class.

# *Music House*

Probably the largest stockist of  
woodwind instruments  
in the North.

- Large selection of new and second hand instruments
- Student rental schemes available on most instruments
  - Keyboard and Clavinova department
- Guitars – large selection of classical, acoustic and electric
  - Brass and string instruments also available
- Mail order service for printed music and accessories
  - Large selection of music and accessories
    - Expert and friendly advice
    - Private testing rooms available
    - In-house repair workshop

18 Cheltenham Parade, Harrogate HG1 1DB  
01423 705770 (closed Mondays)  
Visit our sister store in Bingley

## *Windstruments*

Ryshworth Bridge, Crossflatts, Bingley, West Yorks. 01274 510050 E-mail  
sales@windstruments.co.uk

**\*\*\*\*\* This class leads to the Young Musician of the Festival \*\*\*\*\***

**W8** CLARINET SOLO (GRADE 7 OR 8) Entry: £12  
Not to exceed 10 minutes.  
Perform up to 3 pieces  
Own Choice  
Any piece(s) from the current ABRSM or Trinity Syllabus.  
The winners of Classes RC4, W4, W6, W8, W10, and W16 will be invited to compete against each other in W18 playing the same repertoire from the qualifying class.

**W9** SAXOPHONE SOLO E FLAT AND B FLAT (GRADES 5 OR 6) Entry: £12 OA Fee: £10  
Not to exceed 7 minutes.  
Perform up to 3 pieces  
Own Choice  
Any piece(s) from the current ABRSM or Trinity Syllabus.  
The winners of Classes RC3, W3, W5, W7, and W9 will be invited to compete against each other in W17 playing the same repertoire from the qualifying class.

**\*\*\*\*\* This class leads to the Young Musician of the Festival \*\*\*\*\***

**W10** SAXOPHONE SOLO (GRADE 7 OR 8) Entry: £12  
Not to exceed 10 minutes.  
Perform up to 3 pieces  
Own Choice  
Any piece(s) from the current ABRSM or Trinity Syllabus.  
The winners of Classes RC4, W4, W6, W8, W10, and W16 will be invited to compete against each other in W18 playing the same repertoire from the qualifying class.

**W11** SOLO JAZZ (YEAR 10 AND UNDER) Entry: £12  
Not to exceed 8 minutes.  
Perform up to 3 pieces  
Own Choice  
To include improvisation. Can use accompanist or CD.(Please bring your own equipment).

**W12** SOLO JAZZ (YEAR 13 AND UNDER) Entry: £12  
Not to exceed 10 minutes.  
Perform up to 3 pieces  
Own Choice  
To include improvisation. Can use accompanist or CD.(Please bring your own equipment).

**W13** EARLY SKILLS WOODWIND CLASS (OPEN - GRADES 1-4) Entry: £15 OA Fee: £0  
Not to exceed 4 minutes.  
Perform up to 3 pieces  
Own Choice  
Repertoire to be taken from the current ABRSM or Trinity syllabus.. Suitable for adult learners.

**W14** EARLY SKILLS IMPROVERS WOODWIND CLASS (OPEN - GRADES 5-6) Entry: £15 OA Fee: £10  
Not to exceed 5 minutes.  
Perform up to 3 pieces  
Own Choice  
Repertoire to be taken from the current ABRSM or Trinity syllabus. Suitable for adult learners.

**W15** WOODWIND JUNIOR RECITAL (YEAR 11 AND UNDER) Entry: £12 OA Fee: £10  
Not to exceed 8 minutes.  
Perform up to 3 pieces  
Own Choice  
Should include at least one piece of Grade 7 standard or above

**\*\*\*\*\* This class leads to the Young Musician of the Festival \*\*\*\*\***

**W16** WOODWIND SENIOR RECITAL (YEAR 13 & UNDER) Entry: £15  
Not to exceed 10 minutes.  
Perform up to 3 pieces  
Own Choice  
Should include at least one piece of Grade 8 standard or above.  
The winners of Classes RC4, W4, W6, W8, W10, and W16 will be invited to compete against each other in W18 playing the same repertoire from the qualifying class.

**W17** CHRISTOPHER RICHMOND TROPHY COMPETITION  
Perform up to 3 pieces  
Own Choice  
The winners of Classes RC3, W3, W5, W7, and W9 will be invited to compete against each other in W17 playing the same repertoire from the qualifying class.  
Sponsored by Mr & Mrs N. Richmond

**\*\*\*\*\* This class leads to the Young Musician of the Festival \*\*\*\*\***

**W18** ERNEST HOPPER TROPHY COMPETITION (PLAY-OFF)  
Own Choice  
The highest placed under 19 performers of Classes RC4, W4, W6, W8, W10 and W16 will be invited to compete against each other in this class playing the same repertoire from the qualifying class. The winner of W18 will be invited to compete for the Young Musician of the Festival in the Final Concert on 22nd March at 2:30pm, performing their same piece(s).

**W19** WOODWIND AND/OR RECORDER ADULT RECITAL (OPEN) Entry: £15  
Not to exceed 10 minutes.  
Perform up to 3 pieces  
Own Choice  
Should include at least one piece of Grade 7 standard or above.

**W20** WOODWIND DUET, TRIO OR QUARTET (YEAR 6 & UNDER) - Entry: £8 OA Fee: £0  
NO CONDUCTOR, BUT ACCOMPANIST ALLOWED  
Not to exceed 5 minutes.  
Perform up to 3 pieces  
Own Choice  
May include Recorders.

**W21** WOODWIND DUET, TRIO OR QUARTET (YEAR 8 & UNDER) - Entry: £10 OA Fee: £0  
NO CONDUCTOR, BUT ACCOMPANIST ALLOWED  
Not to exceed 6 minutes.  
Perform up to 3 pieces  
Own Choice  
May include Recorders.

**W22** WOODWIND DUET, TRIO OR QUARTET (YEAR 10 & UNDER) - Entry: £12 OA Fee: £10  
NO CONDUCTOR, BUT ACCOMPANIST ALLOWED  
Not to exceed 7 minutes.  
Perform up to 3 pieces  
Own Choice  
May include Recorders.

**W23** WOODWIND DUET, TRIO OR QUARTET (YEAR 13 & UNDER) - Entry: £12 OA Fee: £10  
NO CONDUCTOR, BUT ACCOMPANIST ALLOWED  
Not to exceed 10 minutes.  
Perform up to 3 pieces  
Own Choice  
May include Recorders.

**W24** WOODWIND GROUP (YEAR 6 & UNDER) (5 OR MORE Entry: £8 OA Fee: £0  
PLAYERS)  
Not to exceed 6 minutes.  
Perform up to 3 pieces  
Own Choice  
Conductor and/or accompanist allowed. May include Recorders.

- |            |   |            |             |
|------------|---|------------|-------------|
| <b>W25</b> | WOODWIND GROUP (YEAR 8 & UNDER) (5 OR MORE PLAYERS)<br>Not to exceed 7 minutes.<br>Perform up to 3 pieces<br>Own Choice<br>Conductor and/or accompanist allowed. May include Recorders.   | Entry: £12 | OA Fee: £0  |
| <b>W26</b> | WOODWIND GROUP (YEAR 10 & UNDER) (5 OR MORE PLAYERS)<br>Not to exceed 8 minutes.<br>Perform up to 3 pieces<br>Own Choice<br>Conductor and/or accompanist allowed. May include Recorders.  | Entry: £12 | OA Fee: £10 |
| <b>W27</b> | WOODWIND GROUP (YEAR 13 & UNDER) (5 OR MORE PLAYERS)<br>Not to exceed 10 minutes.<br>Perform up to 3 pieces<br>Own Choice<br>Conductor and/or accompanist allowed. May include Recorders.   | Entry: £12 |             |
| <b>W28</b> | EARLY SKILLS WOODWIND ENSEMBLE (OPEN)<br>Minimum of 2 and maximum of 20 performers<br>Not to exceed 8 minutes.<br>Perform up to 3 pieces<br>Own Choice<br>Conductor and/or accompanist allowed. Suitable for adult learners. May include Recorders. | Entry: £15 | OA Fee: £10 |
| <b>W29</b> | WOODWIND GROUP (OPEN) (5 OR MORE PLAYERS)<br>Not to exceed 10 minutes.<br>Perform up to 3 pieces<br>Own Choice<br>Conductor and/or accompanist allowed. May include Recorders.  | Entry: £15 |             |

## Brass

- |            |   |            |            |
|------------|---|------------|------------|
| <b>BR1</b> | BRASS SLOW MELODY (YEAR 6 & UNDER)<br>Not to exceed 3 minutes.<br>Own Choice<br>Can include any slow piece. | Entry: £10 | OA Fee: £0 |
| <b>BR2</b> | BRASS SLOW MELODY (YEAR 13 & UNDER)<br>Not to exceed 5 minutes.<br>Own Choice<br>Can include any slow piece | Entry: £10 |            |
| <b>BR3</b> | BRASS SOLOIST (YEAR 6 & UNDER)<br>Not to exceed 5 minutes.<br>Perform up to 3 pieces<br>Own Choice          | Entry: £10 | OA Fee: £0 |

**\*\*\*\*\* This class leads to the Young Musician of the Festival \*\*\*\*\***

- |            |  |            |  |
|------------|--|------------|--|
| <b>BR4</b> | BRASS SOLOIST (YEAR 13 & UNDER)<br>Not to exceed 10 minutes.<br>Perform up to 3 pieces<br>Own Choice<br>The winner of this class will be invited to compete for the Young Musician of the Festival in the Final Concert on 22nd March at 2:30pm, performing their same piece(s). | Entry: £10 |  |
|------------|--|------------|--|

- BR5** BRASS SOLOIST (OPEN) Entry: £10  
 Not to exceed 10 minutes.  
 Own Choice  
 Choose any pieces that demonstrate a range of skills and musicianship.
- BR6** BRASS GROUP (YEAR 13 & UNDER) (5 OR MORE PLAYERS) Entry: £16  
 Minimum of 5 performers  
 Not to exceed 8 minutes.  
 Perform up to 3 pieces  
 Own Choice
- BR7** BRASS / CONCERT BAND ENTERTAINMENT (OPEN) Entry: £20  
 Minimum of 12 performers  
 Not to exceed 20 minutes.  
 Own Choice

## Percussion and Drum Kit

**Live accompaniment is encouraged, but backing tracks may be used (a PA may be provided, but the performer will be responsible for the operation). Notated music is required for classes PD1, PD2 and PD3.**

- PD1** PERCUSSION OR DRUM KIT (YEAR 6 & UNDER) Entry: £8  
 Not to exceed 5 minutes.  
 Own Choice  
 Perform 2 pieces on the Drumkit, Snare Drum, Timpani or Tuned Percussion.  
 You can play 2 different instruments or 2 pieces on the same instrument.
- PD2** PERCUSSION OR DRUMKIT (YEAR 8 & UNDER) Entry: £8  
 Not to exceed 5 minutes.  
 Own Choice  
 Perform 2 pieces on the Drumkit, Snare Drum, Timpani or Tuned Percussion.  
 You can play 2 different instruments or 2 pieces on the same instrument.
- \*\*\*\*\* This class leads to the Young Musician of the Festival \*\*\*\*\***
- PD3** PERCUSSION OR DRUMKIT (YEAR 13 & UNDER) Entry: £12  
 Not to exceed 10 minutes.  
 Own Choice  
 Perform 2 pieces on the Drumkit, Snare Drum, Timpani or Tuned Percussion.  
 You can play 2 different instruments or 2 pieces on the same instrument.  
 The winner of this class will be invited to compete for the Young Musician of the Festival in the Final Concert on 22nd March at 2:30pm, performing their same piece(s).
- PD4** DRUM KIT (OPEN) Entry: £12  
 Not to exceed 6 minutes.  
 Own Choice  
 Play any piece on Drumkit with backing track. No written notation required.
- PD5** PERCUSSION ENSEMBLE (YEAR 8 & UNDER) (4 OR MORE PLAYERS) Entry: £8  
 Not to exceed 4 minutes.  
 Own Choice  
 May include World Music percussion.
- PD6** PERCUSSION ENSEMBLE (YEAR 13 & UNDER) (4 OR MORE PLAYERS) Entry: £12  
 Not to exceed 5 minutes.  
 Own Choice  
 May include World Music percussion.



# RHYTHMIC-CADENCE

THE BEAT OF INNOVATION



Sale

Donner DED-300X  
Electronic Drum Kit

~~£699.99 GBP~~  
£539.99 GBP



Sale

Donner DMT-66 Electric Guitar  
with Ceramic Single-Coil - Blue  
White Gradient

~~£170.00 GBP~~ £144.99 GBP



Sale

Donner DDP-60 88-Key Semi-  
Weighted Upright Keyboard  
Piano Grey

~~£429.99 GBP~~ £289.99 GBP



Sale

Donner DMT-66 Electric Guitar  
with Ceramic Single-Coil -  
Midnight Purple Gradient

~~£170.00 GBP~~ £144.99 GBP

Your **NEW** Music Store supplying  
affordable & innovative instruments

Visit

[www.rhythmic-cadence.com](http://www.rhythmic-cadence.com)

Email

[contact@rhythmic-cadence.com](mailto:contact@rhythmic-cadence.com)



## Bands

- B1** JAZZ/SWING BAND (YEAR 13 & UNDER) Entry: £20  
Minimum of 8 and maximum of 35 performers  
Not to exceed 20 minutes.  
Own Choice
- B2** JAZZ/SWING BAND (OPEN) Entry: £20  
Minimum of 8 and maximum of 35 performers  
Not to exceed 20 minutes.  
Own Choice

## Orchestras

**A pianist playing in these orchestral classes may be a member of staff.**

- OR1** YOUTH/SCHOOL ORCHESTRA (YEAR 6 & UNDER) Entry: £20  
Not to exceed 15 minutes.  
Own Choice
- OR2** YOUTH/SCHOOL ORCHESTRA (YEAR 10 & UNDER) Entry: £25  
Not to exceed 15 minutes.  
Own Choice
- OR3** YOUTH/SCHOOL ORCHESTRA (YEAR 13 & UNDER) Entry: £25  
Not to exceed 15 minutes.  
Own Choice
- OR4** ORCHESTRA (OPEN) - NON-COMPETITIVE Entry: £25  
Not to exceed 15 minutes.  
Own Choice

## Solo Singing

- SS1** SOLO SINGING (YEAR 4 & UNDER) Entry: £8 OA Fee: £0  
Own Choice  
Any classical song up to grade 2 standard (as a guide), NOT from a film or musical theatre.  
Sponsored by Mary Halmshaw
- SS2** SOLO SINGING (YEAR 5 & 6) Entry: £8 OA Fee: £0  
Own Choice  
Any classical song up to grade 4 standard (as a guide). NOT from a film or musical theatre.  
Sponsored by Mrs Paula Berger
- SS3** SOLO SINGING (YEAR 7 & 8) Entry: £8 OA Fee: £5  
Own Choice  
Any classical song from up to grade 5 (as a guide). Not from a film or musical theatre.  
Sponsored by P Dutton
- SS4** SOLO SINGING (YEAR 9 & 10) Entry: £10 OA Fee: £5  
Own Choice  
Any classical song up to grade 6 standard ( as a guide). NOT from a film or musical theatre.
- SS5** SOLO SINGING (YEAR 11 & 12) Entry: £12  
Own Choice  
Any classical song up to grade 8 standard (as a guide). NOT from a film or musical theatre.
- SS6** BAROQUE ARIA OR SONG (YEAR 13 & UNDER) Entry: £12  
Not to exceed 6 minutes.  
Own Choice

**\*\*\*\*\* This class leads to the Young Musician of the Festival \*\*\*\*\***

- SS7** YOUNG SINGER COMPETITION (YEAR 13 & UNDER) Entry: £12  
 Not to exceed 10 minutes.  
 Own Choice  
 A varied programme of Grade 7/8 standard (can include one musical theatre piece pre-1970).  
 The winner of this class will be invited to compete for the Young Musician of the Festival in  
 the Final Concert on 22nd March at 2:30pm, performing their same piece(s) (Content MUST  
 be age appropriate).  
 Sponsored by Mrs M J R Davies
- SS8** FOLK SONG (YEAR 6 & UNDER) Entry: £8 OA Fee: £0  
 Own Choice  
 Either accompanied or unaccompanied.
- SS9** FOLK SONG (YEAR 10 & UNDER) Entry: £12  
 Own Choice  
 Either accompanied or unaccompanied.
- SS10** JUNIOR NORTHERN CHORISTERS' CHAMPIONSHIP (YEAR 6 & UNDER) Entry: £8 OA Fee: £0  
 Own Choice  
 Own Choice - 2 verses of a hymn/sacred song. Entrant must be a member of a Church  
 Choir/Worship Group.
- SS11** SENIOR NORTHERN CHORISTERS' CHAMPIONSHIP (YEAR 13 & UNDER) Entry: £12 OA Fee: £7  
 Own Choice  
 3 verses of a hymn/sacred song with an optional descant. Entrant must be a member of a  
 Church Choir/Worship Group.
- SS12** BOYS - CHANGING VOICES (YEAR 11 & UNDER) Entry: £12 OA Fee: £8  
 Not to exceed 5 minutes.  
 Own Choice  
 Not film or musical.
- SS13** SILVER ROSE BOWL RECITAL CLASS (OPEN) Entry: £12  
 Not to exceed 12 minutes.  
 Own Choice  
 A varied and contrasting programme.
- SS14** OPERATIC/ORATORIO ARIA (OPEN) Entry: £12  
 Not to exceed 6 minutes.  
 Own Choice
- SS15** BRITISH COMPOSER CLASS (OPEN) Entry: £12  
 Not to exceed 6 minutes.  
 Own Choice  
 From any British Composer.  
 Sponsored by Mr M A P & Mrs J Reeve
- SS16** ART SONG IN ANY LANGUAGE OTHER THAN ENGLISH (OPEN) Entry: £12  
 Not to exceed 6 minutes.  
 Own Choice  
 A summarised translation must introduce the song.
- SS17** SOLO SHOW SONG (YEAR 4 & UNDER) Entry: £8 OA Fee: £0  
 Not to exceed 5 minutes.  
 Own Choice  
 A solo from a show, film or musical. Up to grade 2 standard (as a guide).
- SS18** SOLO SHOW SONG (YEAR 5 & 6) Entry: £8 OA Fee: £0  
 Not to exceed 5 minutes.  
 Own Choice  
 A song from pre-1970 Musical or Film (Content MUST be age appropriate)

<b>SS19</b>	SOLO SHOW SONG (YEAR 5 & 6) Not to exceed 5 minutes. Own Choice A song from post-1970 Musical or Film (Content MUST be age appropriate)	Entry: £8	OA Fee: £0
<b>SS20</b>	SOLO SHOW SONG (YEAR 7 & 8) Not to exceed 5 minutes. Own Choice A song from pre-1970 Musical or Film (Content MUST be age appropriate)	Entry: £10	OA Fee: £5
<b>SS21</b>	SOLO SHOW SONG (YEAR 7 & 8) Not to exceed 5 minutes. Own Choice A song from post-1970 Musical or Film (Content MUST be age appropriate).	Entry: £10	OA Fee: £5
<b>SS22</b>	SOLO SONG SHOW (YEAR 9 & 10) Not to exceed 5 minutes. Own Choice A song from pre-1970 Musical or Film (Content MUST be age appropriate).	Entry: £10	
<b>SS23</b>	SOLO SONG SHOW (YEAR 9 & 10) Not to exceed 5 minutes. Own Choice A song from post-1970 Musical or Film (Content MUST be age appropriate).	Entry: £10	
<b>SS24</b>	SOLO SHOW SONG (YEAR 11 & 12) Not to exceed 6 minutes. Own Choice A song from pre-1970 Musical or Film (Content MUST be age appropriate). Sponsored by Ms J Stoney	Entry: £12	OA Fee: £8
<b>SS25</b>	SOLO SHOW SONG (YEAR 11 & 12) Not to exceed 6 minutes. Own Choice A song from post-1970 Musical or Film (Content MUST be age appropriate).	Entry: £12	OA Fee: £8
<b>SS26</b>	SOLO SHOW SONG RECITAL (YEAR 13 & UNDER) Not to exceed 12 minutes. Own Choice Own Choice to include one song pre-1970 and one song from post-1970. (Content MUST be age appropriate).	Entry: £12	
<b>SS27</b>	NEW: SOLO SHOW SONG RECITAL (ADULTS: AGE 19 YEARS AND OVER) Not to exceed 12 minutes. Own Choice Own Choice to include one song from pre-1970 and one song from post-1970. (Content MUST be age appropriate).	Entry: £12	



**NPA**

Northern  
Performance  
Academy

**AGES 4 - 19 IN HARROGATE**

**DANCE**  
**ACTING & IMPROV**  
**MUSICAL THEATRE**  
**FILM & TV**  
**RECORDED MEDIA**

**NORTHERN PERFORMANCE ACADEMY**  
**AN INSPIRATIONAL ARTS CENTRE OF EXCELLENCE**  
**INDUSTRY-STANDARD STUDIO SPACE, PERFORMANCES,**  
**QUALIFICATIONS & COMPETITIONS.**

**[WWW.PERFORMINGARTSTRAINING.CO.UK](http://WWW.PERFORMINGARTSTRAINING.CO.UK)**

**01423 819207**

## Duet & Trio Singing

<b>DTS1</b>	VOCAL DUET OR TRIO (YEAR 6 & UNDER) Own Choice	Entry: £8	OA Fee: £0
<b>DTS2</b>	VOCAL DUET OR TRIO (YEAR 9 & UNDER) Own Choice	Entry: £10	OA Fee: £0
<b>DTS3</b>	VOCAL DUET OR TRIO (YEAR 11 & UNDER) Own Choice	Entry: £12	
<b>DTS4</b>	VOCAL DUET OR TRIO (OPEN) Own Choice	Entry: £15	

## Barbershop

<b>BBS1</b>	BARBERSHOP QUARTET (OPEN) Not to exceed 8 minutes. Own Choice The winners will be invited to enter BBS3 performing their same programme.	Entry: £20	
<b>BBS2</b>	BARBERSHOP CHORUS (OPEN) Not to exceed 10 minutes. Own Choice The winners will be invited to enter BBS3 performing their same programme.	Entry: £20	
<b>BBS3</b>	BARBERSHOP (PLAY-OFF) Not to exceed 10 minutes. Own Choice The winners of BBS1 and BBS2 will be invited to compete against each other performing their same programme.	Entry: Free	

## Choirs

**Choirs must provide their own accompaniment which must be live and cannot include backing tracks. Those choirs that enter more than one class should sing a different repertoire for each class they take part in, unless otherwise stated.**

**These classes will be held at St Mark's Church, Leeds Road, Harrogate.**

<b>CH1</b>	CHOIR (YEAR 2 & UNDER) Minimum of 6 and maximum of 65 performers Not to exceed 6 minutes. Own Choice Pieces to be of contrasting mood.	Entry: £15	
<b>CH2</b>	CHOIR (YEAR 4 & UNDER) Minimum of 6 and maximum of 65 performers Not to exceed 8 minutes. Own Choice Pieces to be of contrasting mood.	Entry: £15	
<b>CH3</b>	CHOIR (YEAR 6 & UNDER) Minimum of 6 and maximum of 65 performers Not to exceed 8 minutes. Own Choice Pieces to be of contrasting mood.	Entry: £15	
<b>CH4</b>	CHOIR (YEAR 9 & UNDER) Minimum of 6 and maximum of 65 performers Not to exceed 8 minutes. Own Choice Pieces to be of contrasting mood.	Entry: £15	

- CH5** CHOIR FROM SMALLER SCHOOLS (ROLL NOT TO EXCEED 120) Entry: £15  
 Minimum of 6 and maximum of 65 performers  
 Not to exceed 8 minutes.  
 Own Choice  
 Pieces to be of contrasting mood.
- CH6** VOCAL GROUP (OPEN) 4-10 SINGERS Entry: £20  
 Minimum of 4 and maximum of 10 performers  
 Not to exceed 8 minutes.  
 Own Choice  
 Pieces to be of contrasting mood.
- CH7** CHAMBER CHOIR CLASS (OPEN) (9-16 PERFORMERS) Entry: £25  
 Minimum of 6 and maximum of 16 performers  
 Not to exceed 10 minutes.  
 Perform up to 3 pieces  
 Own Choice  
 Pieces to be of contrasting mood.  
 The winners will be invited to enter CH11 performing the same programme.
- CH8** CHOIR (YEAR 13 & UNDER) 16 OR MORE MEMBERS Entry: £25  
 Minimum of 16 and maximum of 65 performers  
 Not to exceed 8 minutes.  
 Own Choice  
 Pieces to be of contrasting mood.  
 The winners will be invited to enter CH11 performing their same programme.
- CH9** CHURCH MUSIC - SS AND SATB CHOIR (OPEN) - 8 OR MORE MEMBERS Entry: £25  
 Minimum of 8 and maximum of 65 performers  
 Not to exceed 10 minutes.  
 Own Choice  
 Singing pieces of a contrasting nature.  
 The winners will be are invited to enter CH11 performing their same programme.
- CH10** CHOIR (OPEN) Entry: £25  
 Minimum of 16 and maximum of 65 performers  
 Not to exceed 10 minutes.  
 Own Choice  
 Pieces (not Barbershop) to be of contrasting mood.  
 The winners will be invited to enter CH11 performing their same programme.  
 Sponsored by the Charles & Elsie Sykes Trust who are also awarding the winners a prize of £100.
- CH11** CHORAL CHALLENGE CLASS (PLAY-OFF)  
 Perform up to 3 pieces  
 Own Choice  
 The winners of Classes CH7, CH8, CH9, and CH10 are invited to enter this class performing their same programmes.

## Olde Tyme Music Hall

**The Festival will provide the accompanist.**

- OT1** OLDE TYME MUSIC HALL SONG (OPEN) Entry: £12  
 Up to three performers  
 Not to exceed 8 minutes.  
 Perform up to 3 pieces  
 Own Choice  
 To include a monologue or Victorian/Edwardian Songs. Can be solo, duet or trio. Costumes and Props encouraged.  
 An introduction is expected, and must be included in the performance time.

## Verse Speaking

**A copy of all own choice pieces, with the AUTHOR's AND PUBLISHER's NAMES, MUST be given to the Adjudicator at the beginning of the class. See Rule 31.**

- V1** NEW: VERSE SPEAKING (RECEPTION) Entry: £5  
Not to exceed 2 minutes.  
Own Choice  
Copy must be brought to the Festival with AUTHOR AND PUBLISHER's NAME.  
Non-competitive
- V2** VERSE SPEAKING (YEAR 1) Entry: £8  
Not to exceed 2 minutes.  
Own Choice  
Copy must be brought to the Festival with AUTHOR AND PUBLISHER's NAME.
- V3** VERSE SPEAKING (YEAR 2) Entry: £8  
Not to exceed 2 minutes.  
Own Choice  
Copy must be brought to the Festival with AUTHOR AND PUBLISHER's NAME.
- V4** VERSE SPEAKING (YEAR 3) Entry: £8  
Not to exceed 2 minutes.  
Own Choice  
Copy must be brought to the Festival with AUTHOR AND PUBLISHER's NAME.  
Sponsored by helpwithtalking.com
- V5** VERSE SPEAKING (YEAR 4) Entry: £8  
Not to exceed 3 minutes.  
Own Choice  
Copy must be brought to the Festival with AUTHOR AND PUBLISHER's NAME.
- V6** VERSE SPEAKING (YEAR 5) Entry: £8  
Not to exceed 3 minutes.  
Own Choice  
Copy must be brought to the Festival with AUTHOR AND PUBLISHER's NAME.
- V7** VERSE SPEAKING (YEAR 6) Entry: £8  
Not to exceed 3 minutes.  
Own Choice  
Copy must be brought to the Festival with AUTHOR AND PUBLISHER's NAME  
Sponsored by Mrs M Sutcliffe
- V8** VERSE SPEAKING (YEAR 7) Entry: £10  
Not to exceed 3 minutes.  
Own Choice  
Copy must be brought to the Festival with AUTHOR AND PUBLISHER's NAME.  
Sponsored by Mrs M Sutcliffe
- V9** VERSE SPEAKING (YEAR 8 & 9) Entry: £10  
Not to exceed 3 minutes.  
Own Choice  
Copy must be brought to the Festival with AUTHOR AND PUBLISHER's NAME.  
Sponsored by Mrs Janet Barker
- V10** VERSE SPEAKING (YEAR 10 & 11) Entry: £12  
Not to exceed 4 minutes.  
Own Choice  
Copy must be brought to the Festival with AUTHOR AND PUBLISHER's NAME

**\*\*\*\*\* This class leads to the Speech and Drama Champion of the Festival \*\*\*\*\***

**V11** VERSE SPEAKING (YEAR 12 & 13) Entry: £12  
Not to exceed 4 minutes.  
Own Choice  
The highest placed performers in Classes A6, A10, A15, E4, RD5, V11 and V14 will be invited to compete against each other in the Speech and Drama Championship Final on 22nd March at 2:30pm, performing their same piece (Content MUST be age appropriate).

**V12** SONNET CLASS (YEAR 7 TO 9) Entry: £10  
Own Choice  
Copy must be brought to the Festival with AUTHOR AND PUBLISHER'S NAME.  
One sonnet by any author

**V13** SONNET CLASS (YEAR 10 & 11) Entry: £12  
Own Choice  
Copy must be brought to the Festival with AUTHOR AND PUBLISHER'S NAME.  
One sonnet by any author

**\*\*\*\*\* This class leads to the Speech and Drama Champion of the Festival \*\*\*\*\***

**V14** SONNET CLASS (YEAR 12 & 13) Entry: £12  
Own Choice  
Copy must be brought to the Festival with AUTHOR AND PUBLISHER'S NAME.  
One sonnet by any author  
The highest placed performers in Classes A6, A10, A15, E4, RD5, V11 and V14 will be invited to compete against each other in the Speech and Drama Championship Final on 22nd March at 2:30pm, performing their same piece (Content MUST be age appropriate).

**V15** GROUP SPEAKING (YEAR 5 & UNDER) (6 OR MORE SPEAKERS) Entry: £8  
Minimum of 6 performers  
Not to exceed 5 minutes.  
Own Choice  
Movement may be included. Copy must be brought to the Festival with AUTHOR AND PUBLISHER'S NAME.

**V16** GROUP SPEAKING (YEAR 8 & UNDER) (6 OR MORE SPEAKERS) Entry: £10  
Minimum of 6 performers  
Not to exceed 7 minutes.  
Own Choice  
Movement may be included. Copy must be brought to the Festival with AUTHOR AND PUBLISHER'S NAME.

**V17** GROUP SPEAKING (YEAR 13 & UNDER) (6 OR MORE SPEAKERS) Entry: £12  
Minimum of 6 performers  
Not to exceed 10 minutes.  
Own Choice  
Movement may be included. Copy must be brought to the Festival with AUTHOR AND PUBLISHER'S NAME.  
Sponsored by Mr G & Mrs M Ogden

## Reading

**Readings must be performed using the physical book, not a paper or card insert. Sheets of paper must not be inserted into books and any such performances will result in the downgrading of their mark by one level.**

**Copies of the piece for the Adjudicator must be brought to the Festival. The script must be clearly legible and include the title, author, publisher, name of performer, and class number.**

**Students are welcome to use books with enlarged fonts or coloured overlays to aid their reading.**

**An introduction is expected, and must be included in the performance time.**

**RD1** PREPARED READING (YEAR 1 TO 3) Entry: £5  
Not to exceed 2 minutes.  
Own Choice

**RD2** PREPARED READING (YEAR 4 TO 6) Entry: £8  
Not to exceed 3 minutes.  
Own Choice

**RD3** PREPARED READING (YEAR 7 TO 9) Entry: £10  
Not to exceed 3 minutes.  
Own Choice

**RD4** PREPARED READING (YEAR 10 & 11) Entry: £12  
Not to exceed 3 minutes.  
Own Choice

**\*\*\*\*\* This class leads to the Speech and Drama Champion of the Festival \*\*\*\*\***

**RD5** PREPARED READING (YEAR 12 & 13) Entry: £12  
Not to exceed 4 minutes.  
Own Choice

The highest placed performers in Classes A6, A10, A15, E4, RD5, V11 and V14 will be invited to compete against each other in the Speech and Drama Championship class, SD1, performing their same piece (Content MUST be age appropriate).

## Speaking in Public

**SP1** A TALK ON ANY SUBJECT (YEAR 4 TO 6) Entry: £8  
Not to exceed 4 minutes.  
Own Choice  
Visual aids and note cards may be used.

**SP2** A TALK ON ANY SUBJECT (YEAR 7 TO 9) Entry: £10  
Not to exceed 4 minutes.  
Own Choice  
Visual aids and note cards may be used.

**SP3** A TALK ON ANY SUBJECT (YEAR 10 & 11) Entry: £12  
Not to exceed 6 minutes.  
Own Choice  
Visual aids and note cards may be used.

**SP4** A TALK ON ANY SUBJECT (YEAR 12 & 13) Entry: £12  
Not to exceed 6 minutes.  
Own Choice  
Visual aids and note cards may be used.

## Reading for Performance

- RP1** PERFORMING TEXT (YEAR 4 TO 6) Entry: £8  
Not to exceed 8 minutes.  
A short introduction outlining the chosen theme, performed from memory. Two contrasting pieces of verse and/or prose, linked to the chosen theme, read aloud. A short link between pieces performed from memory and a short conclusion performed from memory.  
Movement may be included. Copies of chosen pieces must be brought to the Festival with AUTHOR AND PUBLISHER'S NAME.
- RP2** PERFORMING TEXT (YEAR 7 TO 9) Entry: £10  
Not to exceed 12 minutes.  
A short introduction outlining the chosen theme, performed from memory. Two contrasting pieces of verse and/or prose, linked to the chosen theme, read aloud. A short link between pieces performed from memory and a short conclusion performed from memory.  
Movement may be included. Copies of chosen pieces must be brought to the Festival with AUTHOR AND PUBLISHER'S NAME.
- RP3** PERFORMING TEXT (YEAR 10 & 11) Entry: £12  
Not to exceed 12 minutes.  
A short introduction outlining the chosen theme, performed from memory. Two contrasting pieces of verse and/or prose, linked to the chosen theme, read aloud. A short link between pieces performed from memory and a short conclusion performed from memory.  
Movement may be included. Copies of chosen pieces must be brought to the Festival with AUTHOR AND PUBLISHER'S NAME.
- RP4** PERFORMING TEXT (YEAR 12 & 13) Entry: £12  
Not to exceed 15 minutes.  
A short introduction outlining the chosen theme, performed from memory. Two contrasting pieces of verse and/or prose, linked to the chosen theme, read aloud. A short link between pieces performed from memory and a short conclusion performed from memory.  
Movement may be included. Copies of chosen pieces must be brought to the Festival with AUTHOR AND PUBLISHER'S NAME.

## Acting

**See Rules 31, 32, 33 & 34. ALL ACTING PIECES MUST BE FROM A PUBLISHED PLAY, an adaptation from a PUBLISHED book or be LAMDA examination piece. Ensure you bring a copy for the adjudicator. All pieces must be suitable for a mixed audience which may include children. Unsuitable material will be disqualified. Costume should NOT be worn. Long practice skirts may be used together with small items such as scarves, hats, shawls, gloves, canes etc. Hand props are permitted. An introduction is expected, and must be included in the performance time.**

- A1** SOLO ACTING (YEAR 1 TO 3) Entry: £8  
Not to exceed 3 minutes.  
Own Choice  
Time limit includes introduction. All solo acting pieces should be from a published play or be a LAMDA examination piece.  
Sponsored by Mr G & Mrs M Ogden
- A2** SOLO ACTING (YEAR 4 TO 6) Entry: £8  
Not to exceed 4 minutes.  
Own Choice  
Time limit includes introduction. All solo acting pieces must be from a published play or be a LAMDA examination piece.
- A3** SOLO ACTING (YEAR 7) Entry: £10  
Not to exceed 4 minutes.  
Own Choice  
Time limit includes introduction. All solo acting pieces must be from a published play or be a LAMDA examination piece.

ALL DISCIPLINES OF PERFORMING ARTS



**STAGE**  
ACADEMY

**16 CLASSES  
A WEEK**

LAMIDA

FESTIVALS  
PERFORMANCE  
EXAMINATIONS  
DANCE PLATFORMS

Le mark sprung dance floor / Fully mirrored studio



CONTACT US NOW FOR YOUR **FREE** TRIAL

[ADMIN@UPSTAGEACADEMY.ORG](mailto:ADMIN@UPSTAGEACADEMY.ORG)

**A4** SOLO ACTING (YEAR 8 TO 9) Entry: £10  
Not to exceed 4 minutes.  
Own Choice  
Time limit includes introduction. All solo acting pieces must be from a published play or be a LAMDA examination piece.

**A5** SOLO ACTING (YEAR 10 & 11) Entry: £12  
Not to exceed 5 minutes.  
Own Choice  
Time limit includes introduction. All solo acting pieces must be from a published play NOT A SKETCH OR MONOLOGUE.

**\*\*\*\*\* This class leads to the Speech and Drama Champion of the Festival \*\*\*\*\***

**A6** SOLO ACTING (YEAR 12 & 13) Entry: £12  
Not to exceed 5 minutes.  
Own Choice  
Time limit includes introduction. All solo acting pieces must be from a published play NOT A SKETCH OR MONOLOGUE.  
The highest placed performers in Classes A6, A10, A15, E4, RD5, V11 and V14 will be invited to compete against each other in the Speech and Drama Championship Final on 22nd March at 2:30pm, performing their same piece (Content MUST be age appropriate).  
Sponsored In memory of Wyn Wilton

**A7** SOLO ACTING - SHAKESPEARE (YEAR 4 TO 6) Entry: £8  
Not to exceed 3 minutes.  
Own Choice  
Time limit includes introduction.

**A8** SOLO ACTING - SHAKESPEARE (YEAR 7 TO 9) Entry: £10  
Not to exceed 3 minutes.  
Own Choice  
Time limit includes introduction.

**A9** SOLO ACTING - SHAKESPEARE (YEAR 10 & 11) Entry: £12  
Not to exceed 4 minutes.  
Own Choice  
Time limit includes introduction.

**\*\*\*\*\* This class leads to the Speech and Drama Champion of the Festival \*\*\*\*\***

**A10** SOLO ACTING - SHAKESPEARE (YEAR 12 & 13) Entry: £12  
Not to exceed 5 minutes.  
Own Choice  
Time limit includes introduction.  
The highest placed performers in Classes A6, A10, A15, E4, RD5, V11 and V14 will be invited to compete against each other in the Speech and Drama Championship Final on 22nd March at 2:30pm, performing their same piece (Content MUST be age appropriate).

**A11** ACTED SCENE (YEAR 1 TO 3) (2 - 3 MEMBERS) Entry: £8  
Not to exceed 4 minutes.  
Own Choice  
Time limit includes introduction. All acted pieces must be from a published play or be a LAMDA examination piece.

**A12** ACTED SCENE (YEAR 4 TO 6) (2 - 3 MEMBERS) Entry: £8  
Not to exceed 4 minutes.  
Own Choice  
Time limit includes introduction. All acted pieces must be from a published play or be a LAMDA examination piece.

- A13** ACTED SCENE (YEAR 7 TO 9) (2 - 3 MEMBERS) Entry: £10  
 Not to exceed 6 minutes.  
 Own Choice  
 Time limit includes introduction. All acted pieces must be from a published play or be a LAMDA examination piece.
- A14** ACTED SCENE (YEAR 10 & 11) (2 - 3 MEMBERS) Entry: £15  
 Not to exceed 8 minutes.  
 Own Choice  
 Time limit includes introduction. All acted pieces must be from a published play or be a LAMDA examination piece.
- \*\*\*\*\* This class leads to the Speech and Drama Champion of the Festival \*\*\*\*\***
- A15** ACTED SCENE (YEAR 12 & 13) (2 - 3 MEMBERS) Entry: £15  
 Not to exceed 8 minutes.  
 Own Choice  
 Time limit includes introduction. All acted pieces must be from a published play NOT A SKETCH OR MONOLOGUE.  
 The highest placed performers in Classes A6, A10, A15, E4, RD5, V11 and V14 will be invited to compete against each other in the Speech and Drama Championship Final on 22nd March at 2:30pm, performing their same piece (Content MUST be age appropriate).
- A16** GROUP DRAMA (YEAR 6 & UNDER) (4 OR MORE PLAYERS) Entry: £8  
 Minimum of 4 performers  
 Not to exceed 8 minutes.  
 Own Choice  
 Time limit includes introduction. Selected from any published play.
- A17** GROUP DRAMA (YEAR 9 & UNDER) (4 OR MORE PLAYERS) Entry: £10  
 Minimum of 4 performers  
 Not to exceed 12 minutes.  
 Own Choice  
 Time limit includes introduction. Selected from any published play.
- A18** GROUP DRAMA (YEAR 13 & UNDER) (4 OR MORE PLAYERS) Entry: £15  
 Minimum of 4 performers  
 Not to exceed 15 minutes.  
 Own Choice  
 Time limit includes introduction. Selected from any published play.
- A19** DEvised DRAMA (YEAR 6 & UNDER)( 4 OR MORE PLAYERS) Entry: £8  
 Minimum of 4 performers  
 Not to exceed 8 minutes.  
 Own Choice  
 Time limit includes introduction. The majority of the text must be original.
- A20** DEvised DRAMA (YEAR 9 & UNDER)( 4 OR MORE PLAYERS) Entry: £10  
 Minimum of 4 performers  
 Not to exceed 12 minutes.  
 Own Choice  
 Time limit includes introduction. The majority of the text must be original.
- A21** DEvised DRAMA (YEAR 13 & UNDER)( 4 OR MORE PLAYERS) Entry: £15  
 Minimum of 4 performers  
 Not to exceed 12 minutes.  
 Own Choice  
 Time limit includes introduction. The majority of the text must be original.

## Mime

- MM1** PHYSICAL THEATRE - MIME (YEAR 4 TO 6) Entry - £8  
Not to exceed 3 minutes.  
Own Choice  
Scenes should allow the development of character and situation and reach a climax.  
Originality is encouraged. This must be a silent mime. A verbal introduction is helpful.
- MM2** PHYSICAL THEATRE - MIME (YEAR 7 TO 9) Entry - £10  
Not to exceed 3 minutes.  
Own Choice  
Scenes should allow the development of character and situation and reach a climax.  
Originality is encouraged. This must be a silent mime. A verbal introduction is helpful.
- MM3** PHYSICAL THEATRE - MIME (YEAR 10 & 11) Entry - £12  
Not to exceed 5 minutes.  
Own Choice  
Scenes should allow the development of character and situation and reach a climax.  
Originality is encouraged. This must be a silent mime. A verbal introduction is helpful.
- MM4** PHYSICAL THEATRE - MIME (YEAR 12& 13) Entry - £12  
Not to exceed 5 minutes.  
Own Choice  
Scenes should allow the development of character and situation and reach a climax.  
Originality is encouraged. This must be a silent mime. A verbal introduction is helpful.
- MM5** PHYSICAL THEATRE - MIME (OPEN) Entry - £15  
Not to exceed 6 minutes.  
Own Choice  
Scenes should allow the development of character and situation and reach a climax.  
Originality is encouraged. This must be a silent mime. A verbal introduction is helpful.

## Entertainment

### See Rules 31, 32, 33 & 34.

- E1** ENTERTAINMENT CLASS (YEAR 4 TO 6) Entry: £8  
Not to exceed 3 minutes.  
Own Choice  
An introduction is expected, and must be included in the performance time. A humorous monologue that may be taken from a play, sketch or book.
- E2** ENTERTAINMENT CLASS (YEAR 7 TO 9) Entry: £10  
Not to exceed 6 minutes.  
Own Choice  
An introduction is expected, and must be included in the performance time. A humorous monologue that may be taken from a play, sketch or book.
- E3** ENTERTAINMENT CLASS (YEAR 10 & 11) Entry: £12  
Not to exceed 4 minutes.  
Own Choice  
An introduction is expected, and must be included in the performance time. A humorous monologue that may be taken from a play, sketch or book.

**\*\*\*\*\* This class leads to the Speech and Drama Champion of the Festival \*\*\*\*\***

**E4** ENTERTAINMENT CLASS (YEAR 12 & 13) Entry: £12

Not to exceed 6 minutes.

Own Choice

An introduction is expected, and must be included in the performance time. A humorous monologue that may be taken from a play, sketch or book.

The highest placed performers in Classes A6, A10, A15, E4, RD5, V11 and V14 will be invited to compete against each other in the Speech and Drama Championship Final on 22nd March at 2:30pm, performing their same piece (Content MUST be age appropriate).

## Open Drama

**OD1** OPEN DRAMA CLASS (YEAR 13 & OVER) Entry: £15

Not to exceed 12 minutes.

Own Choice

2-3 pieces may be performed as part of a recital. The pieces may be from any discipline, including Verse Speaking, Solo Acting, Sonnet, Prepared Reading, Shakespeare, Entertainment, Mime, or A Talk on Any Subject. You may choose to connect the pieces by theme and offer an introduction and links between them, or to offer contrasting standalone pieces (Content MUST be age appropriate).

## The Final Concert

This will be held On Sunday 22nd March at 2.30p.m

The programme is the climax of the Festival and will include:

### **THE YOUNG MUSICIAN OF THE FESTIVAL COMPETITION**

This will feature the leading performers in the Piano, Strings/Guitar/Harp, Woodwind (including Recorder), Brass, Percussion and Singing classes, performing their same programmes of up to 10 minutes duration before three judges whose decision will be announced at the end.

### **THE SPEECH & DRAMA CHAMPIONSHIP FINAL**

This will feature the leading performers in the Solo Acting, Acting, Reading, Verse Speaking, Shakespeare, Entertainment and Sonnet classes performing their same programmes of up to 10 minutes duration before three judges whose decision will be announced at the end.

## Sponsorship

**Concerto Class** (Class CM1) The winner may be offered an engagement with the Harrogate Philharmonic Orchestra if the performance is of a suitable standard and if the instrumentation is appropriate.

## Photography and Filming

No unauthorised photography or video recording is allowed at our Festivals. Where parents/guardians/carers do not wish photos to be taken at all, then the responsible adult attending should ensure that their child/pupil/vulnerable adult is not included in official authorised photos.

In line with Federation recommendations, we request that any person wishing to engage in any photography / filming at the Festival should seek official accreditation with the Festival in advance by contacting Amelia Urukalo ([publicity@hcfmsd.co.uk](mailto:publicity@hcfmsd.co.uk)). The Festival reserves the right to decline entry to any person unable to meet or abide by these conditions.

If anyone has a concern about any photography/filming taking place at the Festival they should contact a member of the Festival Organising Committee who will be pleased to discuss this matter with you.

## Child Protection Policy

**The British and International Federation of Festivals for Music, Dance and Speech** work for amateur festivals everywhere to help create thousands of educational performance opportunities for children and young people each year.

The Federation, and our member Festivals, are committed to ensuring safe environments for children and young people and believe that it is always unacceptable for a child or young person to experience abuse of any kind. We recognise our responsibility to safeguard the welfare of all children and young people, by a commitment to recommend best practice which protects them.

This policy applies to our Board of Trustees, paid staff, Adjudicator members, volunteers, students or anyone working on behalf of the Federation and our member Festivals.

We recognise that:

- the welfare of the child/young person is paramount
- all children, regardless of age, disability, gender, racial heritage, religious belief, sexual orientation or identity, have the right to equal protection from all types of harm or abuse
- working in partnership with children, young people, their parents, carers and other agencies is essential in promoting young people's welfare.

### **The purpose of the policy:**

- to provide protection for the children and young people who participate in our festivals, including the children of festival members
- to provide staff and volunteers with guidance on procedures they should adopt in the event that they suspect a child or young person may be experiencing, or be at risk of, harm

### **We will seek to safeguard children and young people by:**

- valuing them, listening to and respecting them
- adopting child protection guidelines through procedures and safe working practice for staff and volunteers
- recruiting staff and volunteers safely, ensuring all necessary checks are made
- sharing information about child protection and safe working practice with children, parents, staff and volunteers
- sharing information about concerns with agencies who need to know, and involving parents and children appropriately
- providing effective management for staff and volunteers through supervision, support and training.

The Federation will review this policy each year in November in line with Safe Network guidance or sooner in light of any changes in legislation or guidance. All changes will be communicated to our member Festivals in time for the start of the new Festival year.

### **Creating Safer Festivals for Everyone**

A single, definitive Child Protection Policy adopted by all Federation Festivals.

One or more designated Festival Safeguarding Officers (FSO) appointed for each Federation Festival.

For Harrogate this is Rowena Lloyd. She can be contacted on 07711 745985.

Best practice advice in the form of Safe Working Practice and Festival Child Protection leaflets, with support and training for all Festival staff and volunteers. Including clear reporting procedures for anyone with a concern about a child.

Appropriate recruitment and induction procedures for all new Festival staff and volunteers responsible for providing safe environments for everyone attending / performing at a Federation Festival. All Festival stewards and Adjudicators wear identity badges. All teachers/parents/guardians/carers are asked to report all incidents of any nature to anyone wearing a Festival identity badge. All reported incidents will be handled in accordance with the **Safe Working Practice** and **Festival Child Protection** best practice advice. In addition, we will ensure the availability of a quiet area / room where concerns can be expressed in private.

For the duration of the Festival all teachers/parents/guardians/carers are responsible for the continuous care and supervision of their own children/pupils/vulnerable adults. If they are unable to attend personally, they must delegate their responsibilities to an identified adult and ensure that their children/pupils/vulnerable adults are aware of the identity and name of the person responsible for their care. This includes supervision throughout all Festival venues, performance, practice and changing areas that may be provided. **Children must not be dropped off outside the High School, to make their own way inside. They must be accompanied.**

No unauthorised photography, sound or video recording is allowed at our Festivals. Where parents/guardians/carers do not wish photos to be taken at all, then the responsible adult attending should ensure that their child/pupil/vulnerable adult is not included in official authorised photos.

Some children and vulnerable adults may have specific needs in order to take part. If this is the case, we ask the responsible teachers/parents/guardians/carers to contact the Festival prior to arrival. The Festival actively seeks wherever possible to meet these needs but must know beforehand in order to prepare support – or to advise that help cannot be provided on this occasion.

The Festival's Child Protection Policy and approach to Creating Safer Festivals for Everyone is published explicitly in our Syllabus, Programme and on our website. By completing and signing the entry form (or ticking the appropriate box for online entries) all parents / guardians / carers and teachers of entrants under 18 (or vulnerable adults of any age) confirm that they give (or have obtained) the necessary consents for the entrants to take part in the Festival. Without consent the entry to the Festival cannot be accepted.

## **Child Licensing Legislation**

The Festival is obliged to comply with the legislation covering children who make public performances. (Section 37 (3)(b) of the Children and Young Persons Act 1963 and subsequent regulations). This includes making a declaration to North Yorkshire Council (NYC) that we have the relevant Child Protection Policies and safeguarding

procedures in place and that the children's parents/carers have confirmed that the children are fit and that their health will not suffer by taking part in the performance.

Where entries are made by teachers, parents/carers they will be deemed to have given that confirmation in respect of the children concerned. Before making entries on behalf of parents/carers, teachers should ensure that they have that confirmation from the parents/carers in respect of every child for whom they make an entry.

When the entry confirmations are e-mailed to the Run My Festival Correspondents, they will be accompanied by a document requesting information about every performer covered by an entry (name, date of birth, address). This is to ensure that the Festival has the necessary information to support a licensing application to NYC under the legislation referred to above. It is imperative that the requested information is supplied to the Festival promptly



## Festival Organisers

### Vice Presidents

Mrs J.V. Hopper and Mrs M. Webster MBE

### Officers/Trustees

<b>Chairman</b>	Paul Dutton
<b>Vice Chairman</b>	Derek Starling
<b>Secretary</b>	<b>Vacancy</b>
<b>Treasurer</b>	Alan Connell
<b>Trustee</b>	Rowena Lloyd
<b>Trustee</b>	Zoë Walker

### Organising Committee

Esther Woods	<i>Woodwind</i>	Cathy Starling	<i>Accompanists</i>
Georgina Wells & Samantha Laverick	<i>Strings &amp; Harp</i>	Derek Starling	<i>Computer Advisor</i>
Alan Connell	<i>Treasurer</i>	Jane Waring	<i>Speech &amp; Drama</i>
Paul Dutton	<i>Chairman</i>	Julian & Nichola Saphir	<i>Piano</i>
<b>Vacancy</b>	<i>Sponsorship</i>	<b>Vacancy</b>	<i>Festival Secretary</i>
Katie Bell	<i>Brass</i>	Rhiannon Gayle	<i>Singing</i>
Amelia Urakalo	<i>Publicity/Marketing</i>	Amelia Urakalo	<i>Speech &amp; Drama</i>
Rowena Lloyd	<i>Speech &amp; Drama</i>	Cheryl Bratkowski	<i>Percussion</i>
Zoë Walker	<i>Fundraising</i>	Sally Hobkinson	<i>Volunteers Coordinator</i>

### Festival Secretary

This position is currently vacant





**HCFMSD.CO.UK**

Other Festivals in the Region

**Huddersfield Mrs Sunderland Festival**

[www.mrssunderlandfestival.com](http://www.mrssunderlandfestival.com)

**Rothwell Competitive Music Festival**

Contact: Margaret Wilks - Tel: 0113 2932960

[www.rothwellmusicfestival.shutterfly.com](http://www.rothwellmusicfestival.shutterfly.com)

**Skipton Music Festival**

Contact: Jill Wright - Tel: 01535 634526

[www.skiptonmusicfestival.co.uk](http://www.skiptonmusicfestival.co.uk)

**Wharfedale Festival of Performing Arts**

[www.wharfedalefestival.co.uk](http://www.wharfedalefestival.co.uk)

For other events in the region please see

**North Yorkshire Music and Arts Events Diary**

<http://www.stcticketing.org>



Headline sponsor



**RHYTHMIC-CADENCE**